

**SERVING CLEOBURY COUNTRY**

**FEBRUARY 2023**

## OUR CHRISTMAS CUP WINNER



*Smiles all round as new Town Councillor Sally Burns hands Jo of Red Hare Salon the Clarion Cup for the best Christmas-themed window display on the High Street.*

It's a pleasant task meeting with two Town Councillors and walking up and down the High Street to discuss which business premises best represents the chosen theme for the Christmas display. This year it was just that, to represent Christmas feeling.

This time I joined John Greaves and Patrick Buck and we made sure we covered all the business premises; picking the best from some very attractive displays. We agreed that the Market Hall deserved a special mention and liked the efforts from both Flowers by Fiona (last year's winner) and Cleobury Wash House. But Jo at Red Hare was the unanimous choice - she does have a great touch at presenting her business well. The number of other businesses who gave her warm congratulations said it all. The trophy is on display in the salon.

## WE'RE LOOKING MUCH SMARTER

Doesn't the High Street look smart after the road surface was upgraded and the pavements given a proper high pressure cleaning. The Clarion has been critical of the lack of tidiness and there's still a lot to do, like that mess at the Old Music Room as you turn up Childe Road, but

the difference on our main thoroughfare shows what can be done. Newer residents may find it difficult to believe that not many years ago Cleobury Mortimer was given an award as the tidiest town in Britain, we've come a long way since then and not in the right direction.

## THE WIZARD OF OZ

Nothing at all to do with Andy Murray's success Down Under, this is the renowned fairy tale by Frank Baum that was such a hit as a movie. But this version is presented by Lacon Childe School and all parts are played by students of that rather special place. Can you believe the Yellow Brick Road in the school hall?

It's playing for three evenings, from Wednesday the 8th to Friday the 10th this month and adult tickets are £5.00 with the concessions priced at just £4.00.

This is a very ambitious venture, but the school does have a good name for its drama. Come along and give them a cheer.



## Michael Coombes Roofing & Building Maintenance.

Complete Re-roofing, Roof repairs, Pointing & Chimney repairs.  
Slabbing & Brick work  
Wall & Floor Tiling  
Painting & Decorating

Over 20 Years experience in the Cleobury area.

**Call Michael on 07854 047413**



# Victoria Allen Funeral Services

An Independent Family Business offering a  
Personal and Professional Service

Over 25 years' Experience

Competitively Priced

Private Chapel of Rest

Golden Charter Pre-Paid Funeral Plans

Covering All Areas

Home Visits Available

## 01584 879035

24 Hour Service

8 Charlton Rise, Ludlow, Shropshire, SY8 1ND  
[www.vallenfuneralsludlow.co.uk](http://www.vallenfuneralsludlow.co.uk)  
Email: [vafs@btinternet.com](mailto:vafs@btinternet.com)



**The Cleobury Clarion, February 2023**  
**Volume Eighteen - Edition Nine**



*Follow the Yellow Brick Road!  
The Wizard of Oz at Lacon  
Childe. See Page 1.*



*Hazel catkins, as seen on  
God's Little Acre  
Page 15*



*Could this tree be out for a  
walk? See Linda Iles' words  
on the Wyre Forest.  
Page 23.*

**And On Other Pages....**

- |                                 |                                 |
|---------------------------------|---------------------------------|
| 5 - Let's Support Adam          | 29 - Police and Council Work    |
| 7 - Introducing Vladimir        | 30/31 - Doddington Lodge        |
| 9.- The Horticultural Society   | 37 - Cleobury Mortimer Benefice |
| 11 - Dancing to Better Health   | 39 - Simon Morton on Gardening  |
| 13 - The Robin Hood Riot        | 43 - Mrs Grumpy                 |
| 17 - Cleobury Festival          | 45 - The Social Calendar        |
| 19 - Wye to Wyre - fascinating! | 49 - The Community Hub          |
| 21 - Stepping Out! Walking News | 53 - Let's Beat the Scammers    |
| 25 - Philip Dunne MP            | 57 - The Town Council Report    |
| 27 - Lots of Legion News        | 59 - Local Information          |

	<b>cleobury wash house</b>	<b>DRY CLEANING &amp; LAUNDRY SERVICE</b> 20 HIGH STREET, CLEOBURY MORTIMER 01299 270571 HOUSEHOLD & COMMERCIAL WORK WELCOME FULLY ATTENDED, OPEN 7 DAYS
	Self Service ~ Full Service Wash/ Dry/ Fold/ Ironing ~ Large Machine for Big Items Service Washing for Duvets/ Blankets/ Sleeping Bags ~ Team Sports Kit Laundry Service Equestrian Rug Cleaning ~ Laundry Service for Pet Items Professional Shirt Service ~ Nikwax Wash & Proof for Outdoor Clothing <i>.... the place to air your dirty laundry!</i>	



# RED HARE

45 HIGH STREET  
CLEOBURY MORTIMER  
WWW.REDHARESALON.CO.UK

01299 270702

YOUR  
HAIR  
IS  
OUR  
BEST  
ADVERT

PPD FREE - PARABEN FREE - SULPHATE FREE - CRUELTY FREE

“Red Hare now offers a private hairdressing room. Perfect for those wanting more privacy, peace and quiet“



## CLEOBURY CHIROPRACTIC

31 High St. Cleobury Mortimer DY14 8DQ

**JS** James  
Smith  
OSTEOPATHS

We offer both **CHIROPRACTIC** and **OSTEOPATHY**,  
using gentle methods suitable for all ages.  
Appointments available outside of normal working hours.  
Both practitioners are fully registered, insured & regulated.

**Sue Brown**  
MA MSc DC MMCA  
CHIROPRACTOR

- \* BACK PAIN \* SCIATICA \* POSTURAL PROBLEMS
- \* JOINT PAIN \* HEADACHES (arising from the neck)
- \* Some SPORTS INJURIES

- PLUS** \* COMPUTER (DSE) WORKSTATION ASSESSMENTS  
\* BACK CLASS – Weekly exercise class for those with back/neck pain.

**Hands for Heroes**  
Free Chiropractic Care for War Veterans



**iO**  
THE INSTITUTE  
of OSTEOPATHY



01299 519351 / 07932 000028 / 07506 287191

[www.notjustaboutbackpain.com](http://www.notjustaboutbackpain.com)

[www.jsosteopaths.co.uk](http://www.jsosteopaths.co.uk)

**GCC registered**  
General Chiropractic Council  
[www.gcc-uk.org](http://www.gcc-uk.org)

  
General  
Osteopathic  
Council  
**I'M REGISTERED**  
Registration no. 9254  
[www.osteopathy.org.uk](http://www.osteopathy.org.uk)

## **FROM THE BANDROOM**

The band would like to give special thanks for all those who kindly contributed to our funds during the busy Christmas period.

Our Christmas concert in the Parish Hall went really well, with a varied programme, mulled wine, mince pies and a fantastic raffle. Thank you to the friendly staff in the Wash House for selling the concert tickets.

We now begin rehearsing in earnest for the area contest in Corby on February 26th. The title of the music is 'Chorale & Toccata' by Stephen Bulla, which has the makings of an enjoyable but challenging piece.

Our 2023 engagement list is taking shape, so please get in touch if you have a special occasion coming up and are looking for something a bit musically different, you might like to consider booking the band to play. We can tailor the music to your requirements.

For a quote please contact our secretary Amanda on 01584 891199

*Katie Griffiths*

## **LET'S SUPPORT ADAM, A VERY FINE YOUNG MAN**

In July 2024 I hope to be on an incredible adventure to Kenya with Camps International that will not only change my life, it will also have a positive impact on the communities and local environments I will visit.

I will spend four weeks working hard to improve living standards for rural communities that are suffering from high levels of poverty and where

opportunities for young people are limited or non-existent. I also hope to play a critical role in improving and protecting some of the most beautiful wild spaces on the planet and the wildlife that depends on them for survival.

The opportunity to travel, help others and experience the different culture, food and way of living is so exciting, although I have to admit I am slightly nervous. To enable me to join in this trip of a lifetime I need to fundraise to cover the costs of travel and accommodation, vaccinations, kit and to support the valuable project work I will be taking part in.

I am busy coming up with ideas for fundraising and hope you will get on board for this part of my journey. I appreciate with the economic crisis this is not going to be easy but if you can help in any way I would be very grateful.

Thank you for taking the time to read this and I look forward to seeing you at my events. Some of the things I will be offering are:

Craft Stall at Ludlow Market on Monday 20th February selling gifts, cards and jewellery

Afternoon Tea gifts for Mums on Saturday 18th March (just in time for Mother's Day!)

Bingo Night - date to be confirmed

Coffee Morning & Bake Sale - date to be confirmed

Craft Fairs - various dates with stalls to rent for other stallholders

Collection of unwanted clothes for me to re-sell

Dog Walking

Local Farmers Markets selling handmade items

Lucky Squares (£1 for 1 or £2.50 for 3); Quiz Night; Plant/flower sales; Raffles; Christmas Craft Fair; Christmas Trees for Sale (to be ordered in advance) with an additional option of collection and disposal after use

If you would like to know more details please call me on 01299 841032. Thanks

*Adam Ponsford, aged 13.*

## **THE FESTIVAL AT THE EDGE**

A piece of good news to greet you with this, the first Clarion of the year. The Festival at the Edge will be back at Hopton Court over the weekend of July 21st to the 23rd. It was a really good weekend last year if you like your entertainment based upon music, words and original thinking, plus trade stalls that are totally different from the average. It's a family and friends based happening, with something to please all ages.

Genevieve Tudor is involved with the publicity and tells me that Transglobal Underground are appearing. You've got to go and see and them, if only out of curiosity. See you there. JR

## **GOLF CLUB NEWS**

Mike Fazakarley has joined the Club as Food and Beverage Manager and made an impact with two Sunday Lunch launches. The first on January 22nd and next on February 5th that's already sold out.

They are served in the match room between 12.00 noon and 3.00, as two or three options with a special price for children under 12. Great to encourage a family atmosphere for the club. Contact Mike on [catering@cleoburygolfclub.com](mailto:catering@cleoburygolfclub.com) or 01299 271 112 to book.



**CM BESPOKE CARE**

**Q** Care Quality  
Commission  
Registered

**S P C**  
Shropshire Partners In Care

Personal, Nursing and Domestic care.  
Tailored to your needs.

**Call for a free consultation**

**Tel: 01746 718816**  
**Mobile: 07943834132**

www.cmbcare.co.uk  
www.facebook.com/cmbcare  
email: cmbbespokecare@btconnect.com



**07971 361901 or 01299 832484**

**Complete Bathroom Installations**  
**Bathroom Refurbishment or Repairs**  
**Wet Rooms**  
**Professional Wall and Floor Tiling**



For a quality and guaranteed service, call Stuart for a free quote  
Highly Recommended / References available - see my reviews on [www.freeindex.co.uk](http://www.freeindex.co.uk)

**FOR THE BATHROOM YOU DESERVE!**

**Flowers By Fiona** *est 1991*

**Fresh Flowers made to order**  
**Special Occasions**  
**Weddings, Anniversaries, Birthdays**  
**Sympathy Tributes**

**19a High Street,**  
**Cleobury Mortimer**

**Tel: 01299 272 995**



**Phoenix Environmental Ltd.**  
**Contaminated Land Consulting and Contracting**

Bringing 17 years of experience to bear, we provide straightforward advice help guide you through planning, or deal with your contaminated land, geotechnical and geo-environmental issues.

Phoenix Environmental offer both site and office-based services including:

- Regulatory Liaison and Planning Approval
- Phase 1 Desk Studies (Geology, Hydrogeology, Hydrology, History)
- Intrusive Investigation (Phase 2) Design and Application
- Trial Pitting, Cable Percussive Boreholes, Dynamic (Window) Sampling
- Flood Risk Advice
- Geotechnical Investigation/Advice, Foundation Advice
- Risk Assessment (GQRA/DQRA)
- Remediation Strategies/ Verification Reporting
- Environmental Audits/Site Audits
- Site Based engineering and supervision
- Drone Surveys/Media Production



We'll be there to guide you through every stage.  
[www.phoenixenviro.co.uk](http://www.phoenixenviro.co.uk)

Contact us: email. [enquiries@phoenixenviro.co.uk](mailto:enquiries@phoenixenviro.co.uk) Tel. 07800 646691

**THE MANOR HOUSE**  
This report on progress in the matter of the Manor House came too late for the December/January issue, but it makes interesting reading. JR

The team would like to say a huge thanks to everyone who has subscribed to our newsletters and who in other ways has supported and encouraged our cause.

As we near the end of 2022, we can look back and be comfortable that while the ultimate goal has not yet been achieved, we still keep the focus on finding a way to see this beautiful house restored to its original glory and back in use as a valuable part of the Cleobury Mortimer community.

We would like to thank all the subscribers that have joined us this year taking our numbers to 169 and it's very encouraging to see that subscribers are not just currently local residents but people that have lived previously in the Town. In some cases worked in the Manor House when it was a viable and valuable business.

In 2023 we would like to add some stories from people who have more in depth knowledge of the house. We think this would help others to gain a deeper understanding of the importance of restoring this house. If you have any stories you would like to share, please get in touch with us either by replying directly to this email or using the feedback form on the web site.

There are some ideas and actions that are yet to be completed and previously we have spoken about trying to gain images of the rear of the

property to support an approach to Shropshire Planning Dept Conservation Officers. This is to ensure that the current owner is obliged to maintain the property in line with English Heritage requirements to prevent any structural decay.

We are in discussions with a drone operator who has expressed interest in helping but we need to ensure that this activity does not infringe any legislation.

A recent image has been taken of the front of the house which indicates that there is a broken pane of glass. It would be worrying if this was a result of vandalism, but we will try to get a better image to verify that it is not just an unusual shadow.

We can report that the premises at 15b High Street formerly leased to Hollywoods Fencing has been vacated with some ground clearance at the rear. However there is no public information about the future of this land which has elements of the Manor House directly on its borders.

There has been no contact with the owner in recent months, but we hope to rectify that in the early part of 2023.

In the meantime we would like to thank every one who is supporting us either simply through more active participation. It is very much appreciated.

Hope you had a great Christmas however you spent it and we look forward to 2023 with some trepidation for the economy but with hope that things will get better.

*The Manor House Team*

## **INTRODUCING VLADIMIR**

20 or thereabouts years ago I was found to have cancer of my prostate gland. No need to panic, my condition was checked regularly and when the little beggar showed signs of growing I was given radiotherapy and the thing disappeared. I called him Norman after a managing director who could be a real pain in the backside.

A December 29th examination at the Urology Department of Kidderminster Hospital revealed a tumour on my bladder. Quite a shock, as I hadn't ordered one on my Christmas list to Santa, but the smiling and polite staff working with Sister Jackie Askew made me feel it was something that can be sorted out. Time will tell.

I had to give this latest addition to my list of friends a name and the biggest pain in the backside in the world is Vladimir, he of the Putin tribe. So I will be reporting any progress or incidents when they are significant, but what I will not do is get all weepy and looking for sympathy. If I can find a way of laughing, I'll try to make you smile. I won't say that Vladimir is welcome, but if tumour humour makes you smile, I'll be happy. JR

## **SILLY BIT**

**Did you hear about Donald Trump's visit to Japan, when mention was made of Pearl Harbour? Donald denied ever knowing the woman.**

**Professional. Affordable. Local.**



### Electrical Installations

No matter the size, we can gladly undertake all Domestic, Commercial and Industrial installations you require.

A family run business, with over 25 years industry experience.

From period properties to agricultural solutions, we provide a professional service every time. We also do call outs and emergency work.

### Renewable Energy

Protect yourself from rising energy bills by considering renewable energy.

Solar PV is the most accessible way you can save energy by producing electricity from the sun. Earn a tax free income from the electricity your system produces.

Speak to us about how renewable energy can benefit you or your business.

**Whatever your query, give us a call.**

**T: 07971 096267 / 08450 564173**

**W: [www.awe-services.co.uk](http://www.awe-services.co.uk)**

**Two Staks, Eagle Lane, Cleobury Mortimer, Worcs. DY14 8RA**





## THE HORTICULTURAL SOCIETY

I am writing this on the twelfth day of Christmas. I braved the mess which was my garden to be delighted to find helebore and primroses in flower, bulbs showing, and buds on the acers.

But this is February, and no time for rest. You have probably spent January analysing the successes and failures of 2022 and perused the seed catalogues and plant lists to make your plans for 2023.

If you must get down and dirty, let's talk trees. Having lost their leaves, the branch framework of most trees is still visible and they have become major structural and architectural features in the winter garden. There is still time to lightly prune the smaller, thinner growth back to achieve a tidier shape, and to lift the ceiling to give back light to the ground underneath.

No trees? Now is a good time to consider planting one, and the "Times" gardening writers have published an excellent list of colourful and decorative trees for the smaller garden, which we have on file, and we can even help with advice on planting.

For your planted trees, prepare a mulch-mat of dry potting compost/own compost/soil improver (£2 a bag from a

recycling depot) to spread around the base of the trees, leaving a clear area at the trunk, to provide nutrients for the new growing season.

### Jobs-to-do in February

Towards the end of the month prune roses; on shrub, patio and floribunda roses cut out dead and diseased wood, then prune back to 1/4" above an outward-facing bud to create an open-centred bush.

Prune wisteria, cutting back the long, whippy stems to 2-3 buds and removing any spent, old stems to rejuvenate if necessary. Feed and mulch.

Finish pruning standard apples and pears. First take out dead, dying and diseased branches, then any that are crossing over, only taking out a third of the branches in a season. Then cut back to tips to make fruiting spurs.

Prepare the ground for veg and fruit planting by clearing site by hand, then applying 3" mat of well-rotted manure and compost. Check you pH if using spent mushroom compost as this is usually alkaline and may not be suitable.

Chit earliest seed potatoes, sow chillies, peppers and aubergines under cover and then enjoy your garden. Talk to you next month. Remember, live each day as if it were your last, but

garden as though you will live forever. *Linda Ashman, Secretary*

## CHANGING TIMES

The Horticultural Society was founded over 25 years ago and we're moving forward with a new name: from January; we shall be known as Cleobury Gardeners. We retain the Horticultural Society's underpinning constitution and structure, but you'll see our new name on banners advertising our fundraising events, in articles that we write in the Clarion for example, on our Facebook page and on new developments on our website and on Instagram. We are already growing our membership and have a fantastic programme for 2023 which includes informative speakers covering a wide range of topics, from garden ponds to vegetable growing, propagation of flowers and growing drought-tolerant plants, to garden visits. And don't forget our social events! So, we have something to appeal to everyone, whether established gardeners or just starting off with plants in containers. Joining is easy – email [flo.hadley@btinternet.com](mailto:flo.hadley@btinternet.com) or come along to our next meeting at 7.30 in St Elizabeth's Catholic Church, Lower Street, on Monday February 13th.

*Flo Hadley*

*Chair, Cleobury Gardeners*



UPHOLSTERY & INTERIORS

Rosemary Jones

Mob: 07837 609229

Phone: 01584 861823

Email: [info@charltoninteriors.com](mailto:info@charltoninteriors.com)

[www.charltoninteriors.com](http://www.charltoninteriors.com)



**BESPOKE YOGA TUITION**



Relax Breathe Stretch Tone

One to one Yoga lessons

BWY trained teacher with over 15 years experience

Can travel to your home

Angela Kazimierczuk

**07870 506655**



Care At Home

TLC Care at Home are a well-established family run, Home Care Provider who have built up an excellent reputation within our local communities

We have recently been rated as **OUTSTANDING** by CQC and this puts TLC Care at Home in the top 3% of providers in England



### Professional care and support in your own home

Our dedicated Care Team are here to help support you with 24/7 care provision should it be required. At TLC Care At Home, we are dedicated to supporting people with wide range of needs, including Dementia, Acquired Brain Injury, Physical Disabilities, Learning Disabilities, Sensory Impairments and supporting our aging population.

Depending on your individual needs, we can offer varying degrees of support from young adults to very mature people. TLC Care at Home are here to help anyone who requires care and support to enable them to remain living at home for as long as it is safe to do so.

### Comprehensive range of care services

- Domiciliary Care
- Palliative care
- Personal care
- 24 hour care
- Companionship
- Dementia Care
- Overnight Care
- Elderly Care
- Care for young adults
- Supporting younger people
- Domestic services: cleaning, cooking, washing and shopping
- Collections of pensions or prescriptions
- Trips out and about

Please contact us now for more information 01299 272 897  
Email: [wecare@tlc-careathome.co.uk](mailto:wecare@tlc-careathome.co.uk)  
Website: [www.tlccareathome.com](http://www.tlccareathome.com)



## Professional Family Estate Planners

- Wills
- Lasting Powers of Attorney
- Free Will reviews
- Probate support
- Care home fee avoidance
- Free funeral plan with every Will
- Family Protection Trusts



**“A lifetime’s attention to complex legal issues as a retired Detective Superintendent and now a Private Client Lawyer means you can definitely trust Mark and his daughter Lauren to write your Will”**

**T:** 01299 251442  
**E:** [info@ambalegalservices.co.uk](mailto:info@ambalegalservices.co.uk)  
**W:** [ambalegalservices.co.uk](http://ambalegalservices.co.uk)

- Appointments by telephone, video link or in the comfort of your own home
- Over 45 years’ experience in law
- Friendly and professional support for you and your family
- Call us up for a chat to see how we can help!



## **DANCING TO BETTER HEALTH?**

The ancient Egyptian pregnancy dance was a proven boost to health long before the advance of medicine became known. Part one of a two-part study was published in September 2022 in the *Journal of Applied Art and Health*, volume 13 (2) pages 167 to 177.

**Is the Egyptian practise, more commonly known as belly dancing, safe in pregnancy?**

Beneficial views of two expert panels agreed movements were safe and helped with back ache, pelvic discomfort, constipation, sleeplessness and anxiety. It would enhance women's mental health, promote self-image and give them confidence in their ability to birth.

Relational aspects of this ancient dance help to build sisterhood of women and even their transition to motherhood.

### **Holistic Dance Therapy**

The natural healing power of this ancient dance is beneficial for all women irrespective of age, size, health or fitness levels, as the movements are based on the natural structure of the body and help to move the body as it is designed to

move. It relieves lower back pain, gynaecological problems such as the early stages of endometriosis, menstrual and menopausal problems. Improves poor posture, tones weak muscles and improves co-ordination, balance and flexibility. It also helps asthmatics and many more health issues.

Classes are held on Thursday evenings, 7.00 till 8.00pm in the Market Hall. Starting tomorrow!

Call Tina on 01299 272 882 for further information

## **CLOWS TOP GARDENING CLUB**

February 22nd is the first date in our new programme. We are indebted to Elva who works hard to arrange speakers and visits. A change to the time of the meetings; start time of 7.30pm, doors open at 7.00.

We will welcome Helen Picton, of Old Court Nurseries and Picton Garden. Her subject is "daisies", the largest plant group in the world, so Helen will have plenty of scope for her talk!

Old Court Nurseries are a family run concern, situated on the lower slopes of the Malverns. They have been going since 1906, so they must

be doing something right! There are 430 varieties of Michaelmas Daisies in the Picton Garden which is open to the public. Times vary depending on the time of year, so check before you travel.

Your first chance to enter the flower of the month competition. Points are added up throughout the year, and a prize awarded for the most points gained at the AGM in November.

We look forward to seeing you on the 22nd of February, at 7.30pm, at Clows Top Victory Hall.

*Judith Lawson*

## **THE BIRMINGHAM PHILHARMONIC**

The Friends of Saint Mary's Church will be hosting a concert performance by the orchestra in Saint Mary's on Sunday, February 19th at 7.30.

The church acoustics have long complemented the sound of such a quality performance; Brum's Philharmonic always pleases this local audience and this year they offer works by Mendelssohn, Enescu and Elgar. The ticket price of £19.00 includes interval refreshments that will add to the evening's entertainment. Available from Diane Waddington on CM



**The Well Being**

**Holistic Therapies**

Cleobury Mortimer DY14 8AS

[www.thewellbeing.co.uk](http://www.thewellbeing.co.uk)

April Boardman

Reiki Master ITEC MFHT Dip Hyp

**Do you have aches & pains, ongoing health issues or just need to relax? Help is at hand!**

**Deep Tissue & Remedial Massage**

**Reiki & Crystal Healing**

**Hot Stone Massage-Aromatherapy- Reflexology**

**Pregnancy Massage & Hypnotherapy**

**20% off your 1st treatment!**

**Tel 01299 513148 or 07881494036 or Book Online!**

**BILL'S QUALITY METALWORK**  
**5 GREENFIELD ROAD, CRAVEN ARMS, SY7 9QU**  
**Manufacturing Made to Measure Gates and Railings**  
**~Balconies and Staircases, Handrails, Carports,**  
**Structural Steelwork and Mobile Welding Service.**  
**Phone Bill on 07973 248 016 or 01588 673 914**  
**Office for a free quote**

# TDC CARPENTRY SERVICES

Fully insured qualified professional  
 Excellent workmanship and quality customer care  
 From hanging doors, fitting kitchens to bespoke projects

**Tim Clare - 07890 519980**

Do you know a 2, 3 or 4 year old who would like  
 to join our fantastic nursery?



## Stottesdon Gateway NURSERY

We really care and make learning fun

**We can offer:**

A safe and nurturing learning environment with dedicated and caring staff.  
 High quality provision with strong links to Reception.  
 An amazing outdoor area and use of the school facilities and space.

- ✓ Nursery places for 2, 3, 4 year olds, available from September 2021
- ✓ From 15 - 30 funded hours available.
- ✓ BEFORE & AFTER SCHOOL & HOLIDAY PROVISION for children aged 2 - 11 years old.

TO BOOK A TOUR :

Stottesdon C of E Primary School

Stottesdon  
 Shropshire  
 DY14 8UE

**TEL: 01746 718617**

Nursery and Wrap-around sessions (term-time)		Fees
Early Start	7:30am - 8:00am	£4.00
Breakfast Club	8:00am - 8:45/9:00am	£4.00
Morning Session	9:00am - 11:30am	£10.00
Lunch club	11:30am - 12:30pm	£4.00
Afternoon Session	12:30am - 3:00pm	£10.00
After School Club	3:00pm - 5:30pm	£10.00

## **ROBIN HOOD. AS EVER, THE HERO**

It's many years since I went to the panto as a kid, but I'd heard how good the Regal Theatre version was. My lady love and I booked to take my 10 year old grand daughter Ava to see Robin Hood, her first time at a pantomime.

The place was crowded when we arrived and I didn't manage to get a programme as a souvenir. No matter, the idea was to sit back and enjoy the show and fun the many children would have.

The Sheriff of Nottingham made it clear from the start that he was the villain of the piece and quickly built a chorus of booing as he told how he was out to kidnap the king's daughters and keep Robin Hood out of the way. The chorus of cheers for Robin and boos for the Sheriff was taken up by nursery age children through to oldies like me.

Joining in the fun was Nanny Notty Knickerlastic, played by Chris Bianchi with total disregard for personal dignity and much laughter and cheers. The whole atmosphere of the two hour show was fun and the chance to sing and cheer

along with the cast. They included children from local dance schools and the Regal's own School of Creative Arts, all impressively disciplined but adding to the fun feeling.

You expect the cast to be out to get laughs, but the trio in the orchestra pit were at it too. We wondered why there were yellow soldiers helmets laying amongst the instruments, but when a battle developed between the two elements the musicians put them on and gallantly played on through a rain of plastic balls. They deserved a medal each, maybe a Kings Cross instead of the Victoria version?

There were loads of funny turns and romantic moments between Robin and Maid Marion before the leading characters fell out. And what an absolute hoot that was, as Robin ran and the Sheriff chased around the theatre, with children cheering them on, then they disappeared and emerged on screen running around the town, over the bridge and then around the circular building on Cross Street before they re-emerged in the theatre to huge cheers. It was the first time I'd seen a live chase blended with film and

the effect was tremendous. That few minutes of action and the delight of the children in the audience watching it made it clear why Christmas Panto at the Regal is so very popular.

Of course the wicked Sheriff got his just desserts, Robin Hood got Maid Marion and the audience got a show that was worth every penny. Producer Andrew MacDuff and director Chris Garner along with the whole cast did a wonderful job and made a lot of children and both parents and grandparents happy.

This year's show is 'Aladdin', running from December 15th to the 31st. The copy of the programme I got to see said that if you booked by the end of January the price will be the same as last year. Tell them that the Clarion was late telling you and ask if they'll be kind. Every experience I've had of the friendly people running the place suggests they might take pity on you.

It's such a welcoming place and I've got into the habit of checking what's coming that will further broaden my view of good old fashioned theatre.

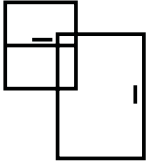
*Jim Reynolds*



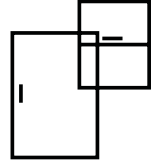
**Kim Stanley**  
30, High Street  
Cleobury Mortimer  
Shropshire  
DY14 8DQ

**Tel. 01299 271800**  
[www.kimstanley.co.uk](http://www.kimstanley.co.uk)





# Ashley Bannister Windows & Doors



- UPVC Windows & Doors
- Composite Doors
- Porches & Conservatories
- Glass Unit Replacement
- Fascia, Soffit & Guttering
- Handles & Letterboxes
- Hinges & Window Restrictors



**No Job Too Big or Small**  
Certass Approved Installer  
*Local Tradesman Based in Highley*

ashban94@hotmail.com  
Ash: 07817 785245



## Twit - Twoo Falconry

- **Static and flying displays with owls & falcons**
- **Fetes and fayres**
- **3 hour bird experiences based in clows top**
- **Garden parties and birthdays**
- **1-2 hour talks for indoor hall and outdoor visits**



**For quotes and bookings ring Steve Woodison 07738014884 or  
Email [scw1960@hotmail.co.uk](mailto:scw1960@hotmail.co.uk)**



## ROYAL FOUNTAIN INN

13 Church Street, Cleobury Mortimer, DY14 8BS



- Serving food 12-3 Tuesday - Sunday and 6-9 Tuesday - Saturday
- Cake and coffee deals from 3-6pm everyday
- Fantastic range of food and drinks with deals every weekend
- Large, heated marquee and biggest beer garden in town
- Live music every month
- We can cater for all occasions and parties of all sizes



01299 272720  
info@theroyalfountaininn.co.uk



## CARING FOR GOD'S ACRE

I can hardly believe it is February already. But look out of the window and the signs are already there. At a recent Churchyard Task Team outing, the first one of 2023, we found a primrose in flower - yes, in January.



*Hazel catkins, the first of the year's bright colours that bring cheer to God's Acre.*

So what can we expect in February, particularly in our churchyards. Still sleeping or hibernating will be hedgehogs, bats and, if you are lucky, dormice, with eyes shut tight until the weather gets warmer. They are fortunate to live in such a special environment. This is what we nurture at Caring for God's Acre.

The first signs of spring are appearing. Bright green catkins hang in huge numbers from the hazel trees, each made up of 240 individual flowers and loads of pollen. They are stunningly

beautiful, standing out as colour on a leafless tree. They are also striking against the nearby dark green ivy, a plant crucial to winter around your local church. The thick foliage offers cover and warmth, while berries are scooped greedily by blackbirds, thrushes, redwings and blackcaps.

I think of February as the raucous, noisy month. The birds that started practising their newest song in late January are still trying to fine tune it. They are trying to attract that best looking hen in the hedge or tree, or feeding on that convenient bird table. The robin's song is pleasant, they have been singing throughout autumn and keep singing until the summer, when they take a two or three month sabbatical! As the days get lighter (yes really) you will hear the blackbird singing his heart out - look up and spot him at the top of a tall tree, his blackness shimmering in the winter sun on a good day.

Some birds sing beautiful music but can be drowned out by the grating, rasping noise (we cannot dignify it as music) of the rooks. They return to the habitats of last year, repairing nests which have deteriorated and building new ones as they prepare for parenthood again.

They work in colonies in tall trees, usually oak or ash. The noise as they build will be replaced by an even louder racket as babies appear and the feeding frenzy begins. I love the din they make but I am not sure everyone would agree with me.

PS You will be getting 10 hours and 48 minutes of daylight by 28<sup>th</sup> February

*Anni Holden Calver*

*Trustee of Caring for God's Acre*

## THE READING GROUP

A pleasant evening was enjoyed in December, with wine and nibbles, courtesy of our members. Unfortunately the November book, Milkman by Anna Burns, did not fare so well, finished by very few. I believe the concept was good and some appreciated the writing. A much easier read for the Christmas break, The Curious Charms of Arthur Pepper by Phaedre Patrick. A lighthearted novel with a kaleidoscope of characters, some more stereotyped than others. Rather contrived but a gentle, amusing read. We await delivery of God of Small Things by Roy Arundhati. Opinions will be put forward on February 20<sup>th</sup> at Cleobury Library. *Deana Kimber*

## MIKE AND SHELLEY ROBERTS

**Haulage Contractors**

**Supplier of Aggregate and Asphalt products**

12 Lacon Close, Cleobury Mortimer DY14 8EF

**07860 669350**

**07966 045012**



## Find Your Smile at Cleobury Dental Practice

Whether you're looking for dental implants to replace missing teeth, invisible braces for a straighter smile, boosting your confidence with teeth whitening or a dedicated dentist for your regular care, you can find it all here in the heart of historic Cleobury Mortimer.

- Modern, state of the art facilities and the latest dental technology
- Free car parking adjacent to the practice and step-free access to our dentists' surgeries
- Enjoy private dental care from just 47p per day with our membership plans
- Highly experienced in helping those with dental phobias

### Services Provided

- Tooth-Coloured (White) Fillings
- Sedation for Anxious Patients
- Teeth Straightening with Braces and Invisalign
- Dental Implants (Replacement of Missing Teeth)
- Emergency Appointments Slots Available (first come first served)
- Hygienist Services
- Private and NHS Care (NHS subject to capacity)

### Opening Hours

Mon, Tue, Wed and Fri **9am-5pm**  
Thu **9am-7pm**  
Saturdays **by appointment only**

**Tel: 01299 271 747**

**[www.cleoburydental.co.uk](http://www.cleoburydental.co.uk)**

BDA Good Practice  
Member

 **invisalign**  
PROVIDER



### CLEOBURY W.I.

Our official 100<sup>th</sup> birthday was on December 7th and we rounded off our centenary by planting a Rowan tree in the commemorative garden, then enjoyed prosecco and cake at Judy's. Several members met for a bracing Christmas jumper walk, despite the freezing temperatures, followed by welcome refreshments kindly supplied by Sue Kershaw.

The Christmas social evening saw 26 members getting together for a festive three course meal at the Market Hall provided and served by Wendy and staff from the King's Arms. Also in December, we were delighted to be nominated by Kim Grenfell as Champions of the Community and allocated tickets for the excellent performance of Robin Hood at the Regal Theatre in Tenbury. Several committee members joined in the fun. *"Oh yes we did!!"*

It was good to see so many members and guests for our first meeting of 2023. Francis Engleheart gave an interesting talk on the History of Kinlet Hall with slides to demonstrate the changes (and what remains the same!) over the years in the hall, church and surrounding area.

Twenty-five members and guests attended an evening of defibrillator and emergency first aid training presented by Liz Vanegas de Quickenden. Liz ably demonstrated how to use a defibrillator and apply CPR, as well as how to deal with choking. We then had the opportunity to ask questions and put the procedure into practice using manikins. Liz

highlighted the fact that there is a shortage of First Responders, who work on a purely voluntary basis and rely on monetary donations to purchase everything they need from vehicles to equipment and uniforms. We are all very grateful for the work they do.

We look forward to welcoming Holly Joynson to our February meeting, when she will talk about Dance for Health and Well-being, and will no doubt get us up and moving.

On February 23rd we will be holding our second Winter Warmer lunch from 12.15 – 2pm, when everyone in the community is invited to come along and enjoy a bowl of delicious soup and a range of desserts, all home-made of course, for a very reasonable cost. This will be the last chance to support our annual charity, Midlands Air Ambulance, before our year ends in March.

Thank you to everyone who supported us during our centenary year. We made some great memories. A new batch of commemorative tea towels is on order and they will be on sale at £6.50 each.

The latest donations of nbbchildren's clothes have been sorted. Parents and grandparents are invited to make use of the good quality (free!) second-hand clothes which are stored in the entrance at the Market Hall.

For further information or to join WI, you are welcome to contact Judy 01299 270983 or email [judyasant10@gmail.com](mailto:judyasant10@gmail.com)  
*Val Sniadowski*

### CLEOBURY FESTIVAL

This year's big town event will be on Saturday June 24th, from

12.00 noon until 7.00. If you came to last year's event you'll know what a great laugh and fun day it was, and this year's will incorporate lessons learned.

Like all the trade and local club and interest stalls being out on the sports field with no small signs pointing elsewhere and confusing visitors. All stall space will be free, with the people running the stall responsible for setting it up and running it.

Booking the stalls is the job of Charlotte Rose, who's on 07557 769 746 or [charlie\\_r313@hotmail.com](mailto:charlie_r313@hotmail.com). She can tell you what space is available and where; if you were there last year, she'll be in touch direct.

Deadline for booking space is March 1st, so get in touch with Charlotte as soon as you can.

### NIGHTINGALE NURSING

A huge thank you to the Sunday Charity League of Cleobury Mortimer for donating over £1,000 to the Nightingale Nursing Fund. Thanks also go to Neen Savage W.I. who held soup lunches in the Market Hall throughout December and donated the profits to the N.N. fund. Thank you to all who supported in any way. It is appreciated.

The fund is there for patients of the local doctors surgery who find themselves with a medical crisis. The fund pays for carers, nurses, paliative care nurses from care agencies to assist in these times. Please feel free to contact the doctors surgery or any one of the trustees if you are in need or know of anyone struggling.

*Rosemary Abbiss*

# John Brazier & Co

Accountants & Business Advisors

Accounts – Company, Partnership and Sole Trader  
Tax Returns – Corporation Tax and Personal  
VAT - Returns and advice  
Payroll Service including RTI

For a personal and  
professional service

Contact John Brazier or Sarah Morgan to discuss your requirements on 01299 271473 or email at [info@johnbrazierco.co.uk](mailto:info@johnbrazierco.co.uk). Alternatively, you can arrange a meeting at 53, High Street, Cleobury Mortimer, Worcestershire DY14 8DQ

01299 271 473



## Bumperscuff Rescue

● Body Shop excellence ● Home convenience

**Cost effective car body repairs!**

● Bumper scuffs ● Paint scratches  
● Kerbed alloy wheels ● Small dents

Free no obligation quotes, all work fully guaranteed Call **Andy Taylor** now on **07834 322216** or visit [www.bumperscuffrescue.co.uk](http://www.bumperscuffrescue.co.uk)

### CLEOBURY MORTIMER CARPETS

Supplying and Fitting of:-

- Carpets
- Natural floorings (Cair, Sisal & Seagrass)
- Vinyls

Carpets supplied by: Victoria Carpets, Fibre Flooring  
& Alternative Flooring at Unbeatable Prices

Contact Details:-

Address: 26 High Street  
Cleobury Mortimer •DY14 8BY  
Telephone: H: 01299 270095  
M: 07739 186163  
Email: [garethleach@aol.com](mailto:garethleach@aol.com)  
or check out our new website  
[www.cleoburymortimercarpets.co.uk](http://www.cleoburymortimercarpets.co.uk)

## INFINITE ELECTRICAL SOLUTIONS

For all your electrical needs:

House rewires

Fuse board upgrades

Electric showers

Need an extra socket or light installed?

No job too small

For a FREE quote

Call Lloyd 01584 811184



## WYE TO WYRE

**Kit Smith explains an exciting project that will affect our locality for many years to come.**

Severn Treescapes is a new and ambitious project to create a 60-mile corridor of enhanced tree cover to connect two of England's largest semi-natural woodlands crossing Gloucestershire, Herefordshire, and Worcestershire and into Shropshire. The corridor will stretch from the lower Wye Valley and Forest of Dean in the south to our Wyre Forest in the north. It will demonstrate that increasing woodland connectivity at a regional scale, whether through woodlands, hedgerows, orchards, agroforestry, can work alongside productive agricultural systems and with local communities. It will build on the remaining pockets of ancient woodland to create a climate resilient landscape, all within thirty miles of the homes of around eight million people.

Here in Cleobury Mortimer, though on a much smaller scale, we are slightly ahead of the game by having developed a similar ambitious project within our Neighbourhood Plan which is due to go for approval at a local referendum this summer. We have named and mapped ten Wildlife Corridors with a total length of over nine miles that connect with each other and the Wyre Forrest and via the Rea and Teme rivers to the Severn. We are enhancing connectivity and tree cover with new lengths of corridors and have policies that include the requirement 20% tree cover for all new housing development. Together with major tree planting by landowners, with Marley Hall's extensive and visionary landscape and with a Neighbourhood Plan requirement we are contributing to the Severn Treescape project at its northern end.

The scale and ambition of the Severn Treescapes project is impressive. The question is "Is it realistic and possible?" To break the issues down to manageable sizes and comprehensibility, it might be worth looking at the total project as a sandwich.

The top layer of the bread of the sandwich is made from Ambition, Mission, Vision and Determination. The bottom layer is the base layer made up of existing experience and expertise of the three Wildlife Trusts of Gloucestershire, Herefordshire and Worcestershire, together with dedicated landowners and community groups working in the corridor.

As with any good sandwich, the middle layer is the exciting and active part, full of colour, taste, flavour and texture. The recipe of the mix includes existing assets of nature reserves, existing tracts of trees and hedgerows. New flavour is added by community groups activity such as Cleobury's project. It only needs another ten or so, such local projects from within the 60 mile corridor to make a huge difference. Schools, colleges and universities, local businesses, landowners, wilding areas, arboretums, tree planting groups and communities add spice and vitality.

The whole sandwich is held together by the top layer of aspiration and the bottom layer of coordination and cooperation. It can work. We can and should make it work to save our humanity and that of nature and the environment. A "Wyred" corridor/forest could be our legacy into the next millennium.

*Kit Smith*



### **Grainger Jones your local independent financial adviser**

Grainger lives in Cleobury Mortimer giving the residents and surrounding areas a dependable financial planning service.

- **Wealth Management**
- **Retirement Planning**
- **Investments & Savings**
- **Family & Business Protection**

An initial consultation is available at no charge

To book an appointment or just have a chat, please contact Grainger below.

tel: 07974 100089

email: [grainger@meridenfp.co.uk](mailto:grainger@meridenfp.co.uk)

website: [www.meridenfp.co.uk](http://www.meridenfp.co.uk)



## What can a Nutritionist help with?

- Digestive issues
- Chronic Fatigue
- Sleeping issues
- Painful periods
- Menopause
- Migraine
- Type 2 Diabetes
- High Cholesterol
- Skin Conditions
- Children's Health
- Anxiety/Depression
- Vegan/vegetarian diets
- Weight Management
- plus many more

Visit [www.eatyourselfbetter.co.uk](http://www.eatyourselfbetter.co.uk) to find out more or book a free mini consultation to see what I can do to help you. 07790521636



## TURNERS GATES

bespoke sizes at standard prices



A small family run business specialising in quality wooden gates to suit all entrances.

Visit our website: [www.turnersgates.co.uk](http://www.turnersgates.co.uk)

Drop us an email: [turnersgates@outlook.com](mailto:turnersgates@outlook.com)

Or give us a call on: 01299 270 965



## TIME TO CLEAN YOUR OVEN? LET US DO THE JOB YOU HATE

AS SEEN  
ON TV

- Ovens
- Grills
- Extractors
- Filters
- BBQs
- Microwaves
- Hobs
- Ranges
- AGAs

Call or go online today for your free estimate

**OVENCLEAN**  
The original oven cleaning specialists

07913 123543  
[ovenclean.com](http://ovenclean.com)



# Stepping Out! Who's Walking, When and Where.

## ROCK PATHFINDERS

As ever, the Pathfinders have a mixed selection of walks for this year. Here is their February selection.

Thursday, 2nd. 10.00 start from Blackstone Area car park, Bewdley By-pass, DY12 1PU

Thursday, 16th. 10.00 start from The Grange, Mortimer's Cross, Leominster HR6 9PD

Web address: [mdsskey@rockpathfinders.uk](mailto:mdsskey@rockpathfinders.uk) or telephone Alan on 01299400304

## THE FOOTPATH ASSOCIATION

Exercise was possibly a New Year's resolution for some people, including me, as there was a good attendance at the first Walking for Health of 2023. The weather was mixed as we followed one of our Winter routes around our interesting town with only a couple of rain showers. The socialising continued afterwards over a welcome warm drink and cake at the Coco coffee morning in the Market Hall. 10.00am on the second and fourth Wednesday are the dates for your diary if you wish to join us.

Although the heavy rain didn't let up, 28 hardy people in full waterproof clothing enjoyed (or maybe that should be endured) the New Year's Day walk. Afterwards twenty went on to the King's Arms for refreshments, the first time since the pandemic that we have been able to enjoy the post New Year's Day walk get together. Many thanks to the staff at the KA for their warm welcome and delicious food.

There is a full programme of Country Walks for 2023 with varied routes mainly based on the CMFA leaflet walks. The Snowdrop Walk, a firm favourite, takes place on Sunday February 5<sup>th</sup> starting at 10.00 outside St Mary's Church. The flowers are usually resplendent along the route through Mawley so let's hope 2023 lives up to previous years. These walks are around 2 to 2.5 hours and are a good way to enjoy our countryside and meet new people.

The rivers Severn, Wye and Teme are a beautiful asset to our local countryside. At this time of year muddy paths, puddles together with larger scale flooding often restrict a lot of walking routes. The Wyre

Forest has lots of well surfaced paths to enjoy. A local walk is described in the CMFA leaflet 1, appropriately named "a wander round Cleobury". It has three routes of varying lengths from 1.5 to 3.5 miles which can be adapted for most people's needs.

I have often wondered about the names given to the full moons. Ancient cultures, particularly Native Americans, gave them names based on the behaviour of plants, animals and the weather. January's is called Wolf Moon after the howling of hungry wolves, not a sound we often hear in Cleobury, but one that you can vividly imagine. The Snow Moon of February reflect the heavy snows of North America. It is sometimes called storm or hunger moon. This is not a definitive list as there are other names in different cultures.

*Veronica Hargreaves*

*An intriguing glimpse into the naming of moon phases in Veronica's CMFA report. Can any of our American readers add to the list, please? I'm sure our readers here in Britain would be pleased to learn more. Jim Reynolds.*

**WINDSOR PRICE REPAIR SHOP**  
Automotive

Email: [mikeytwonames@icloud.com](mailto:mikeytwonames@icloud.com)  
Tel: 07468 521816

Unit 1, Hillocks Farm,  
Cleobury Mortimer, DY14 0EB.

MOT	Brakes	Diagnostic
Services	Cam Belts	Exhausts
Repairs	Clutches	Tyres

# Mark Pearce

Landscape, Design and Rustic Garden Furniture

- Fencing
- Patios
- Drives
- Decking
- Garden Sheds
- Summer Houses
- Fence Panels
- Log Stores



And Much More

Top Quality Fully Treated Timber Products

Mobile: 07875425028

Tel: 01746718404

## Robert Bradley Logs

07794 798616



*Seasoned Firewood, Hardwood,  
Softwood or Mixed loads of logs.  
Free Local Delivery*



Fresh milk and cream from  
Cleobury Mortimer

[www.mawleytownfarm.co.uk](http://www.mawleytownfarm.co.uk)

01299 270359



## SKELLERNS

DOORS & WINDOWS



- UPVC Fascias & Guttering
- UPVC Windows, Doors & Conservatories
- General Home Improvements

- Re-roofing & general building work
- Replacement Glass
- Patio Jet Washing



Free No-Obligation quote. FENSA registered company with years of experience

Call on: 07807 759595 or 01584 890681

[www.skellernsdoorsandwindows.co.uk](http://www.skellernsdoorsandwindows.co.uk)



When I worked at the Wyre Forest Discovery Centre as an environmental educator we had an engaging activity called 'Meet a tree'. Children or adults would work in pairs: one blindfolded, one leading the way to a tree of their choice which the other had to get to know using their sense of touch. (We took pains to teach safe ways of working although these were sometimes forgotten in the excitement of the moment. Payback time for any shortcomings in the leader's carefulness or safety awareness came when the roles were reversed!). On being taken back to the start the blindfold was removed and the now sighted participant tried to locate 'their' tree. There were many learning points: how vulnerable we feel when we can't see, the usefulness of our neglected other senses, the tendency of slugs to sit on tree trunks in damp weather, or the unreliability of our best friend! What impressed me most was the individuality of trees – not so much in a plantation but very evident in a woodland of mixed species and ages.



It is in my nature to care about individual trees. I know that forest management demands a more general approach and that trees need to be removed during thinning to help the growth of those remaining and bring light into the woodland environment. Sometimes trees have to be felled for safety reasons or because they have grown in the 'wrong' place. These decisions depend on a value judgement but trees are very often treated as an expendable inconvenience. (I'm not talking about the growth of timber here, i.e. the harvesting of a renewable resource in a sustainable way.)

To me, each tree felling is a sadness, whatever the reason. These organisms photosynthesise, using the sun's energy to build complex sugars out of water and carbon dioxide and releasing oxygen back into the air. They form relationships with fungi in the soil and are eventually returned to the soil by fungi when they die. Their shape encourages rain water to penetrate into the soil rather than adding to surface flood water. They shelter us from hot sun, strong winds, noise and pollution. They provide homes and food for a huge variety of wildlife. And of course they are beautiful.

Some of us will have favourite trees: they may be ancient, or have childhood associations (or both!), they may have unusual shapes or characteristics, or significance as landmarks. I'll leave you with this photo of a tree which my ex-colleague Mandy Jones encountered in Eymore Wood. Unlike Tolkien's Ents, described in *'The Two Towers'*, this one stays still, but you can imagine the great strides it would make as it toured the woods, shepherding its flock of young and old trees that define, nourish and shelter all the wildlife of the woodland ecosystem.

*Linda Iles*

### **A SOUP LUNCH**

**Available at the Melville Methodist Church at Oretton on Wednesday, February 8th. between 12.30 and 2.00pm**

## Clarion Clippings - The Local News



A small local business.

I am a qualified lawyer with over 30 years experience offering a personal and approachable service.

I undertake specialist will drafting, lasting powers of attorney, deputyship applications and probate.

*"I've used Mandy at Westons Wills and Probate numerous times over recent years covering all aspects of her expertise. Her guidance on the way forward and solutions to issues that she has suggested has been excellent. She is extremely communicative and responsive, and handles difficult situations with compassion and empathy. I have happily and confidently recommended her services to everyone I know that would benefit from her services."*

*"Mandy Weston of Westons Wills and Probate is a very professional and knowledgeable person. She has now become my 'go to' legal adviser and has taken on many legal tasks for me and my family. Wills, Probate, Inheritance Tax and Powers of Attorney. I trust her judgement and experience to act in mine and my family's best interest. I would highly recommend her legal services to anyone."*



**Contact me today**

**"Great expertise and a friendly professional manner"**



**Contact Mandy Weston Phone 01299 405873 Mobile 07931 411733**

**Email** [mandy@westonswillsandprobate.co.uk](mailto:mandy@westonswillsandprobate.co.uk) **Website** [www.westonswillsandprobate.co.uk](http://www.westonswillsandprobate.co.uk)

**Address** The Old Snuff Mill Warehouse, Park Lane, Bewdley, Worcestershire DY12 2EL

**No. 19**  
**The Beauty Room**  
 with Jane Weaver

Wash away the aches, pains and stress of everyday life by indulging in a relaxing Swedish massage, any combination of back, shoulder, neck, arms and legs, ½, ¾, 1 or 1½ hrs, or treat yourself to a manicure/pedicure, waxing or tinting.

Telephone consultations available to discuss any personal requirements, treatments available at No.19 or in your own home. Contact Jane on 07968 582269 or email [19thebeautyroom@gmail.com](mailto:19thebeautyroom@gmail.com)

*Just like the lotus flower we too have the ability to rise from the mud, bloom out of the darkness and radiate into the world!*

Soft furnishing and  
 Interior Design Services

**Masquerade**  
 Fabrics Limited

**01299 271 680**  
 36 High Street Cleobury Mortimer near Kidderminster  
 Worcestershire DY14 8DQ

Retailers for Sanderson, Harlequin, Monkwell  
 Crowson and many more...

**Comprehensive design, measuring and fitting service.**

**FOR ALL YOUR ACCOUNTANCY REQUIREMENTS**

**Fairway Accountants**

[www.fairway-accountants.co.uk](http://www.fairway-accountants.co.uk)

Head Office: 01299 822283  
[team@fairway-net.co.uk](mailto:team@fairway-net.co.uk)

Simon Hector: 07896 439594  
[sjh@fairway-net.co.uk](mailto:sjh@fairway-net.co.uk)





## Philip Dunne's Letter from Westminster

Local planning issues often fill my postbag and can be a source of significant concern to local residents affected by an application and rightly so.

Planning issues are at the heart of our communities, permitting the very homes we live in, the schools our children go to, the hospital we visit and the roads that take us there. That is why reforming the way our outdated and bureaucratic planning system works is so important. Many people complain to me that it is not currently delivering for the people locally that use it or the communities that need good homes to live in.

Most people recognise that we need to build more houses, especially affordable homes, across the country. In Shropshire sadly many young families are forced into renting for longer than they want to and struggle to find suitable homes when they can afford a mortgage. But that also means we need to build the right homes in the right places.

The Levelling Up and Regeneration Bill which finished its passage through the Commons before Christmas, recognises that it is communities themselves who are best placed to make decisions on local development. The Bill will modernise the planning system for the 21st century and give residents a louder voice to ensure that development reflects community preferences. Under the reformed system, local plans will be given more weight and the plan making process will be sped up.

This will not only give communities like ours in South Shropshire more certainty that the right homes will be built in the right places but will also give more assurance that areas of environmental importance will be respected in decisions on planning applications and appeals and crucially, will remove centrally imposed house building targets.

The legislation puts communities at its heart. It will introduce a requirement for local planning authorities to produce design codes for their areas, which will have full weight in planning decision making. Digitising the planning system will make it easier for communities to access the system and help

groups typically underrepresented in planning decisions to make their voices heard in their area. This compliments ongoing pilots which are testing new digital initiatives, such as online 3D maps and QR code systems to enable residents to interact with the system in new ways.

A new Infrastructure Levy will also be introduced to help fund the schools, GP surgeries and road improvements needed, which has been a regular concern in local planning applications in South Shropshire. The levy will be set locally to allow Shropshire Council to tailor it to our local circumstances. There will be a consultation on the workings of this new levy, which I was pleased to have confirmed will also be available to ensure water supply and treatment improvements can benefit.

The Government remains wholeheartedly committed to the benefits of neighbourhood planning. The new Bill will strengthen neighbourhood planning and give these plans greater weight in planning decisions. The legislation will also help even more people to get involved in neighbourhood planning by introducing a new tool for parish councils and neighbourhood forums called a neighbourhood priorities statement. This will allow communities to identify priorities and preferences for their area which the local authority will be obliged to take into account when preparing its local plan.

It is our neighbourhoods that feel the impact of planning most immediately. I am hopeful that these reforms will genuinely empower people from all backgrounds to get more involved in decisions that shape where we live.

*Philip Dunne*

# Do you suffer from heat loss, outside noise or draughty windows like many older properties?

**Bespoke  
Secondary  
Glazing**

Secondary glazing from Lansec greatly reduces draughts and heat loss while retaining the traditional appearance of your original windows

- **Recommended** by Historic England for heritage and Grade 2 listed buildings
- **Barely visible** from inside or outside
- **Colour matched** to your existing windows
- **10 year** material and labour guarantee
- **Local**, family run business



**01299 544013**  
**lansecglz.co.uk**

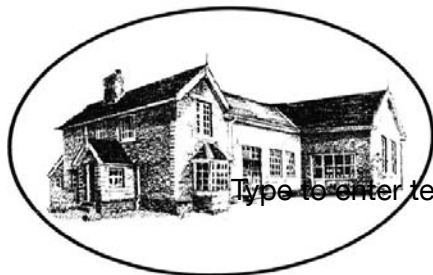
Unit 4 Blackmanstitch, Long Bank, Bewdley, Worcs DY12 2QW



**LANSEC**

## Bayton Church of England Primary School

*- Be the best you can be, as a child of God -*



Type to enter text

[www.baytonceprimary.co.uk](http://www.baytonceprimary.co.uk)  
01299 832393  
[office@baytonpri.worcs.sch.uk](mailto:office@baytonpri.worcs.sch.uk)

Call or email to book an appointment to visit our school and meet our staff.

*"We offer an alternative and unique Primary School experience, in an idyllic rural setting. A small family-orientated school with a caring ethos and traditional values, coupled with excellent results. If you want the very best for your child, come and visit us."*

*Ms. Jolanda Simmonds  
Head Teacher*

*\*Spaces currently in Years 4, 5 & 6, and we are also welcoming Parents & Carers of September 2019 intake.  
Governor vacancies – please call for information\**

Rated "Outstanding" in our latest SIAMs inspection (March 2018).

Friendship – Hope – Perseverance – Compassion – Trust – Forgiveness – Responsibility – Respect – Truthfulness

Our school vision: We aim for everyone to be a part of our community, be life-long learners who are confident, enthusiastic, valued and reach their God given full potential.



## **C M ROYAL BRITISH LEGION**

The November Poppy collections raised a total of £5855.86. A great start to our Poppy Appeal collection for the year.

We are in need of more (and younger) members and plan to increase the presence of the RBL in an attempt to improve membership. We shall be holding information sessions and publicising the RBL around the area. I will be at the Farmers' Market this month with information for any who are interested.

Our next event is the Annual Lunch on March 26th; soon. Branch meetings are on the 2nd Wednesday of the month at 7pm, alternating between the Sports and Social Club and one of the town pubs. The February meeting is in the Talbot on 8<sup>th</sup> February.

*Mike Hermolle – Branch Chairman*  
01299 271384

## **FAR FOREST/ROCK LEGION**

Poppy Appeal Organiser, Jim Wood reports that over £9,972 has been banked. Further contributions should take the total over £10,000.

Martin Fisher, Poppy Appeal Organiser for Strensham Services

on the M5 has confirmed that collections there totalled £18,306.

The next Branch Meeting will be at the Rock Cross Inn at 7.00 on Monday March 13th

*Nigel Caldicott*

## **FESTIVAL OF EALING COMEDIES**

In the Parish Hall every Sunday evening in February at 6.00pm - a treat for the cold weather. Ealing comedy is one of British cinema's most powerful brands. These films have stayed fresh even after more than 70 years in the public eye - among the most loved films of all time. Join us for the movies (tickets £5): The Ladykillers - 5 February; The Titfield Thunderbolt - 12 February; The Lavender Hill Mob - 19 February; and Whisky Galore - 26 February.

Seating at tables and soup and pudding will be available for £3. Bar open throughout.

## **INVITATION TO A CHARITY LUNCH**

Thursday February 23rd at 12.00 upstairs in the Market Hall

Join us to enjoy. soup with an International flavour, crusty bread with a cheese platter and fresh fruit.

Payment will be by donation to support Christian Aid in its work with the world's poorest people.

*Gabrielle Eve*

## **ST JOHN'S, DODDINGTON**

### **A walk through Titterstone Clee Hill's industrial history**

*A guided walk through the industrial features of this important site*

February 16th 10:30am 1:00pm

Tickets £5 (£10 including fish & chip lunch) from [ticketsource.co.uk/st-johns-church-doddington-south-shropshire](http://ticketsource.co.uk/st-johns-church-doddington-south-shropshire)

An optional fish and chip lunch will be available at St John's Church, Doddington at the end of the walk. Please book to secure your place.

[stjohnsdoddington@gmail.com](mailto:stjohnsdoddington@gmail.com)  
01584 318036

### **Titterstone Clee: a hill, a people and a dialect shaped by industry**

*A talk by Alf Jenkins MBE*

March 16th 6:30pm-8:30pm at Clee Hill Village Hall with refreshments. Tickets free, but limited, so please book using ticketsource link above or contact us.

Alf was born and grew up on the hill and has recorded and shared its history for much of his life.



# **Firewood**

**Seasoned logs, barn dried & ready to burn.**

**Free local delivery -01584 890993 or 07970878224**

**Various size loads available**



**Paul Harding Tree Services**





**18 February 7.30pm**  
**Downton Abbey - A New Era**

The Crawley family goes on a grand journey to the South of France to uncover the mystery of the dowager countess's newly inherited villa.

**Tickets £5 - Bar, tea, coffee, cake**

**Cleobury Mortimer Parish Hall is the largest in the area**

Would you like to celebrate an event, party, wedding, or just a get together?

We are able to cater for small or large parties, sit down dinner parties for up to 100 people with or without a bar.

Come and have a look at what we can offer. To book, call Janet on 01299 271070

 [www.cleoburyparishhall.uk](http://www.cleoburyparishhall.uk)

 [cleoburymortimerparishhall](https://www.facebook.com/cleoburymortimerparishhall)



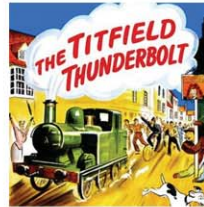
**FEBRUARY FESTIVAL  
 OF EALING COMEDY**  
 Sundays in February 6.00pm

**Tickets £5.**

**Soup and pudding £3**



**5 February  
 The Ladykillers**



**12 February  
 The Titfield  
 Thunderbolt**



**19 February  
 The Lavender  
 Hill Mob**



**26 February  
 Whisky Galore**



## **The Lamp Restaurant**

15a High Street, Cleobury Mortimer, Shropshire, DY14 8DG

01299 272785 or 01299 271313

Fully Licenced and Air Conditioned

Serving Bangladeshi & Indian Cuisine



**The Lamp Restaurant winner of Currylife award chef of the Year**

**Open 7 days a week from 6.00pm until 11.00pm**

The Lamp's cuisine, inspired by Sylhet, the second city of Bangladesh, offers a wide variety of choice along with established favourite dishes and a selection of Chef's Specials.

The wide variety of starters and accompaniments chosen by our chef to complement your main course.

Takeaway service offers free delivery up to 3 miles for orders over £15.00.

Find us on Facebook: Lamp Inn Cleobury Mortimer

## TARGETED COMMUNITY AND POLICING WORK AIMED AT IMPROVING CLEOBURY TOWN CENTRE

A targeted programme of community partnership and policing work across Cleobury Mortimer has helped to take significant steps to address issues of anti-social behaviour and drug use in the town.

The extensive work has been led by West Mercia Police's local Safer Neighbourhood Team in conjunction with Cleobury Mortimer Town Council, the Lacon Childe School, children's services and the community itself. It has seen a proactive range of measures taking place since issues of concern were first raised last summer.

Pubs in the town have been visited with this engagement reinforced by checks to ensure compliance with licensing rules.

A proactive letter drop to more than 300 residents has been sent out backed up by a relevant newsletter and Neighbourhood Matters Leaflets.

There has also been close work with both children's services and senior staff at the Lacon Childe School to look at different ways of working with young people to involve them fully in tackling the town's issues.

A joint project with Cleobury Mortimer Town Council has also carried out a thorough review of closed circuit television to make sure the coverage meets the needs of the town and the council is in the process of fixing High Street signage.

Sergeant Kate Øen, from the local safer neighbourhood team, said: "Our priority as the local safer neighbourhood team is to listen to our local communities and, through working in partnership with our partners and local residents, address the issues that matter to them the most.

"We know there were local concerns around anti-social behaviour in Cleobury Mortimer and over the past few months have worked closely with the town council and local school to find the best ways to resolve these. Working in partnership is absolutely crucial and I think all involved can be pleased with the progress that has been made."

As well as the extensive programme of community work, additional policing measures have been brought in to support the work of all the partners involved.

A significant number of additional uniformed patrols by South Shropshire Neighbourhood Teams have been carried out as well as patrols by plain clothes officers. These have included domestic abuse risk management checks, a significant number of additional patrols by both the South East and South West Shropshire Safer Neighbourhood Teams as well as plain clothes CID officers.

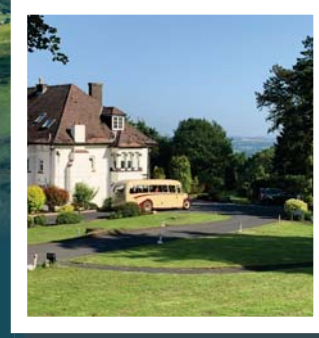
In specific operations, two drugs warrants have been executed leading to arrests and police have investigated reports of incidents of anti-social behaviour in the High Street with action taken where appropriate – in some cases anti-social behaviour letters have been issued.

Posters relating to anti-social behaviour and drug use have also been distributed throughout the town encouraging anyone who is concerned to contact the Safer Neighbourhood Team.

Councillor Debbie Brown, chair of Cleobury Mortimer Town Council, said: "This has been a great piece of teamwork with the future well-being of Cleobury at the very heart of it. Everyone involved cares about the town's well-being and we have had a successful few months as a result. But we know we mustn't rest on our laurels and are determined to continue building on the good progress made so far."

If anyone has concerns about crime and disorder in the town then they can talk to the local safer neighbourhood team by contacting 101.

Alternatively, information can be passed to Crimestoppers anonymously on 0800 555 111 or by visiting [www.crimestoppers-uk.org](http://www.crimestoppers-uk.org). Crimestoppers is 100% confidential, individual's details are never passed to police.



# Living with us Doddington Lodge

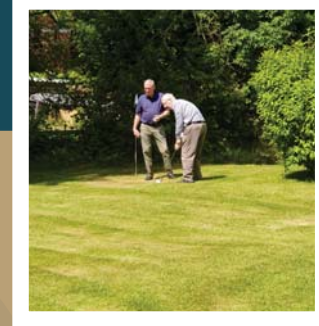
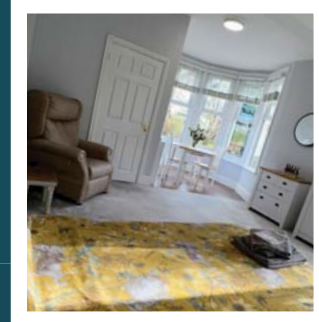
*Care and Warmth at its Heart*

We like to welcome you and your family to Doddington Lodge, our newly renovated, privately owned residential and dementia care home in a peaceful, tranquil hamlet of Doddington, Nr Clebury Mortimer. Located on the beautiful Shropshire & Shropshire border, providing stunning views from every aspect of our home.

Doddington Lodge is a place where friendships are made and special moments are shared. We organise many fun activities that everyone can get involved with, whether that's a sing along, arts and crafts, collecting fresh veg from the allotment or just simply helping each other with a crossword in our daily newspaper. Each day is different, we certainly have many happy moments...

Modern bistro dining room and bar with a daily menu created by our accomplished chefs. Individually designed spacious double rooms, perfect for couples to stay together or beautiful single rooms with en-suites and stunning countryside views. A hairdressing salon for a little pampering and a place of well-being.

Our home is a loving community and family, where you can consider Doddington Lodge a home away from home. We will provide you with all the key information, guiding you through every step of the process, whether you are staying with us for a short or long stay.



## DODDINGTON LODGE BRINGS HOME SME FAMILY BUSINESS OF THE YEAR AWARD

Last month, we were lucky enough to attend the SME Gala Dinner Awards at the prestigious Wembley Arena in London. A night of celebration and recognition of small to medium-sized businesses across the UK. We were absolutely thrilled when it was announced that Doddington Lodge had won Family Business of The Year 2022!

We would like to take this opportunity to thank everyone who made this accomplishment possible. From our hard-working team, our residents, family and friends and the wider local community - we are so grateful for your support. This is a momentous occasion for us all, one which we won't soon forget!



[www.doddingtonlodge.com](http://www.doddingtonlodge.com) | E: [enquiries@doddingtonlodge.com](mailto:enquiries@doddingtonlodge.com) | T: 01584 707084

Doddington Lodge, Residential Care Home, Doddington, Nr Clebury Mortimer, Shropshire DY14 0HJ.



*Remember to follow us*

Come along!  
Coffee morning  
on Friday 10th  
February 2023



Join us for a warm cup of cheer and plenty of laughs at our monthly **Doddington Lodge Coffee Mornings!**

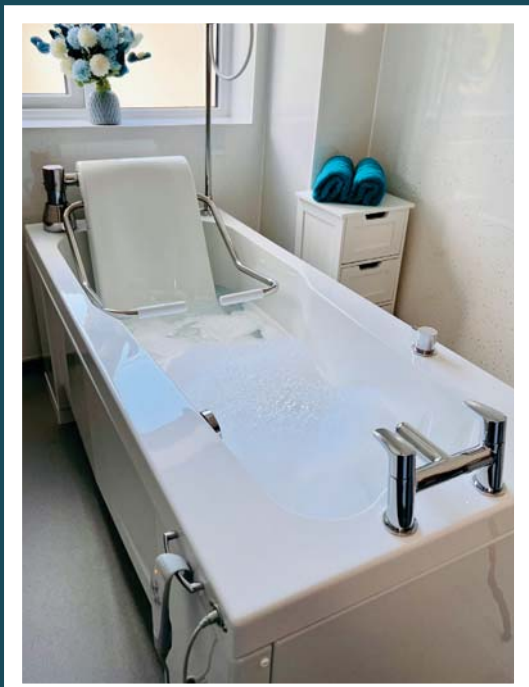
Every 2nd Friday of the month, come together with residents, family & friends over tea or coffee. Enjoy freshly baked cake as well as the Doddington Lodge monthly raffle.

For only £2.50 per person – including your beverage and slice of cake – join us for our first get-together on Friday, February 10th, 2023, from 10 am until midday.

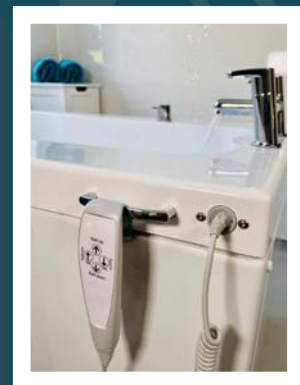
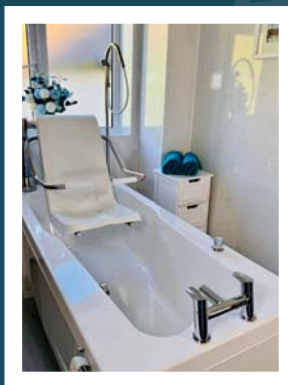
A warm welcome awaits on these frosty mornings - We look forward to seeing you!

## ‘Doddington Lodge A Day Away From Home’ Self-Care & Respite Day is Coming Soon!

We are so delighted with our fabulous new luxury specialist bathroom. Bath bombs and bubbles, relaxing in the bath, and having a pamper is something everyone can enjoy, with our Comfort VH1700 Variable Height Transfer Bath with integrated powered seat, nursing arms and safety strap, along with TMV3 WRAS compliant brassware & shower unit. Thank you to EA Mobility for such an amazing job!



‘Doddington Lodge A Day Away From Home’ Self-Care & Respite Day is coming soon! We’ll take care of everything, so you can enjoy a day away from home in a beautiful location with plenty planned for your relaxation. It can make all the difference, allowing you to enjoy a day away from home to relax and have a well-deserved rest and to re-energize. To find out more email: [enquiries@doddingtonlodge.com](mailto:enquiries@doddingtonlodge.com)



[www.doddingtonlodge.com](http://www.doddingtonlodge.com) | E: [enquiries@doddingtonlodge.com](mailto:enquiries@doddingtonlodge.com) | T: 01584 707084



# Purrfect Cattery

Comfortable and spacious pens for single or double occupancy  
fully licenced by Shropshire Council

visit our website: [www.purrfectcattery.co.uk](http://www.purrfectcattery.co.uk)

Contact us on: 01299 270565 or mobile: 07968 111415

Or email: [enquiries@purrfectcattery.co.uk](mailto:enquiries@purrfectcattery.co.uk)

## TIRED OF THE SAME OLD BEER?

We've all been there, you've just got home and there is no beer in the fridge. You contemplate popping to the nearest shop\* and then you remember all they stock is Fosters, Carlsberg and some manky looking white cider that hasn't even seen an apple.

Don't worry, we are here for you!

The UK's freshest craft beer subscription service is now live, delivering amazing beer from the UK's best independent breweries to your door. You can choose to join the club and get a case of hand selected beers once a month or just buy the one case as a one-off.

BECAUSE Life is too short for Sh\*t Beer

\*Please note this is not implying any of your local shops have a poor range of beer. Its is a generic statement used for marketing purposes. I imagine your shop probably has nice beer.



Take your fancy smart phone out and scan this QR code. The magic of the internet will unfold right in front of your eyes. Here you can register for more updates, discount codes and ace competitions.





## CARTER'S ANTIQUES



We are looking to purchase all manner of antiques, jewellery, coins, medals and curiosities.

For a free valuations kindly telephone  
**John Carter: 07779 311792**  
Or email: [johnbarney743@gmail.com](mailto:johnbarney743@gmail.com)

## SINGING LESSONS

Professional singer and experienced teacher recently moved to this area  
Vacancies available

All styles, ages, standards welcome  
Contact Angela Kazimierczuk on  
07870 506655



*Natalie Taylor* Dip CFHP MPS Pract.

**Specialist Foot Health Practitioner**

Specialising in:-

- In-growing toenails
- Fungal infections
- Nail trimming
- Verrucae
- Calluses
- Corns

All from the comfort of your own home.

If you would like to make an appointment, please call on **07779 113982** or **01584 890112**



## COUNTRY SKILLS

CPCS/NPTC Approved—fully insured

- Outside Renovation
- Tree Surgery, Hard Landscaping
- Slabbing and Fencing
- Decking, Roofing
- Contract Mowing

Call for a free quotation

R. Price & Sons

Mobile: 07967 140720 Email: [roger@country-skills.co.uk](mailto:roger@country-skills.co.uk)

## Painter/Decorator Christine Smith

Friendly, local, female professional. Any job considered: including Indoor/outdoor, walls, windows and doors, wallpaper & preparation. DBS checked. Fairly priced. Free quotes.

Call: **07977296335**

E: [clsartcontact@gmail.com](mailto:clsartcontact@gmail.com)



*Carole Clayton -Funeral Celebrant*

*07971 543790 - 01584 890007*

*[www.preciousmemoriescelebrant.net](http://www.preciousmemoriescelebrant.net)*

*Local, Qualified and Insured*

*For a personal, bespoke service to celebrate your loved one's life.*



*Claire Bradley*  
*Floral Designs*

Florist for all occasions, specialising in wedding and funeral flowers

Winner of the Matrimony Award 2020 Best Wedding Florist  
Nominated for 2021 Matrimony Awards

Christmas workshops available

Email: [clairebradley1@icloud.com](mailto:clairebradley1@icloud.com)  
01299 270415 or 07980 580770



**Domestic oil-fired boiler breakdown & maintenance services.**

27 years' field-service experience with leading UK boiler manufacturer Worcester Bosch.

**Donovan Taylor**

**Tel: 01299 828670 or 07807 837040**

[donovan.taylor@sky.com](mailto:donovan.taylor@sky.com)

[www.greenstar-boiler-repairs.com](http://www.greenstar-boiler-repairs.com)

Caring about your environment and providing an honest, professional & reliable service you can trust



Bagginswood, Clebury Mortimer,  
Nr. Kidderminster, Worcs. DY14 8NB  
Telephone: 01746 718732

### Heath Farm Meats, Bagginswood

#### Opening Hours

Wed 8am to 5.30pm, Thurs 8am to 7pm, Fri 8am to 5.30pm, Sat 8am to 12.30pm

#### Straight from Our Farm to Table

We rear & sell all our own beef, pork, lamb & mutton through our shop on farm. We also make our own flavoured sausages, burgers, home cured bacon, gammon etc. No order too large or small.

Hams ● All Poultry ● Honey ● Mawley Milk & Cream ● Ashley's Cakes & Bread ●  
Jams ● Eggs ● Cheeses ● Apple Juice ● Potatoes ● Meat Pies ● Sticks & Logs

Telephone 01746 718732 with your order to arrange a date & time for collection

**Sorry to hear that Jenny of Shoe Box fame is pottering off to Hampshire. She will be missed. So I will be doing the Shoe Boxes for the foreseeable future. There's no way I can match Jenny, but I will try. My contact number: 07976 307 889. KEITH BALMER**

### **MORE ABOUT SHOE BOXES**

**For Boys and Girls:**

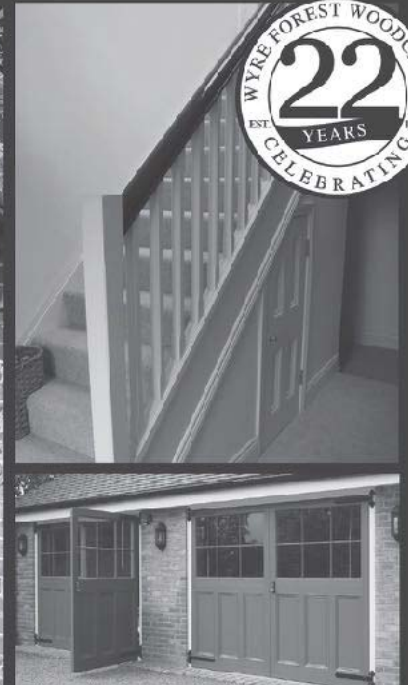
**Toothbrush & toothpaste, hair accessories/brush, soap & face cloth, stationery & paper, gloves, hat & scarf, new socks/underwear, a soft toy, game, puzzle, small musical instruments, toy vehicles, small ball, sweets (use by date from June), a photo and message from yourself.**



**WYRE FOREST  
WOODCRAFT**  
purpose made joinery

**Specialists in the Manufacture  
of Purpose Made Joinery**

- Tailor Made Timber Windows
- Traditional and Contemporary Style Timber Doors
- Custom Made Staircases
- Bespoke Conservatories
- Made to Measure Gates




TO SEE EXAMPLES OF OUR FULLY FACTORY FINISHED JOINERY VISIT OUR WORKSHOPS AND SHOWROOM

[www.wyreforestwoodcraft.co.uk](http://www.wyreforestwoodcraft.co.uk)

01562 68100 | [enquiry@wyreforestwoodcraft.co.uk](mailto:enquiry@wyreforestwoodcraft.co.uk)

Oldington Lane | Firs Ind Est | Kidderminster | Worcestershire | DY11 7QN

**IRENA** S.A.C DIP. (DIST). N.C.F.E. M.C.F.H.P.  
FOOT HEALTH CARE PRACTITIONER




All your foot problems dealt with:-

- Foot health check • Verrucas etc.
- Corns • Medical Manicure
- Callus • Medical Pedicure

Free vascular Doppler Check of your feet

The Old Farmhouse  
Button Bridge, nr Bewdley  
DY12 3AW



Mobile visits available  
01299 841 277  
hessins@gmail.com

**Paul Harding**  **Tree Services**

- Tree surgery and felling
- Woodland thinning & maintenance
- Hedge trimming & grass cutting
- Supplier of hardwood logs, kindling and garden bark

•NPTC certified fully insured. Domestic and commercial work undertaken.  
Tel 01584 890 993 Mob 07970 878 224

**Hollywaste Holiday Lets**


Our 2 bedroom (ensuite) cottage, sleeps up to 6 adults, situated in Hollywaste, Cleobury Mortimer. Fully equipped kitchen, open plan living room with log burner, dining area and downstairs WC. Includes Freesat and fast WiFi. There are enclosed & open decking areas outside, to take advantage of the beautiful countryside views, and a grassed area for outdoor games.


Open all year round and welcomes adults, children, 1 large dog or up to 2 small dogs

Discount of 10% available for locals simply quote "keepitlocal" at the checkout

Events we can accommodate:  
Staycations, Pamper weekends, Shooting weekends, Wedding venue, Minimoon stays, Stargazing weekends, Cookery weekends & events, Camping and caravan pitches are also available!  
If you're interested in hiring our space or land for any event and time frame.

Tel: 07962 151322 Email: [hollywasteholidaylets@gmail.com](mailto:hollywasteholidaylets@gmail.com) FB: <https://www.facebook.com/HollywasteHolidayCottage>  
Website: <https://hollywasteholidaylets.squarespace.com> for more information



**Glenys Turpin Reflexology** 

Reflexology is a non-invasive form of complementary medicine. It involves a method of treatment in which pressure is applied to the feet or hands to treat a wide range of ailments and is effective in promoting deep relaxation and well-being.

Reflexology does not claim to cure, diagnose or prescribe. It may be used alongside orthodox medicine and may be helpful with stress related symptoms and other conditions.

For more help and information contact Glenys...

5 New Road, Cleobury Mortimer. [gkenturp@hotmail.co.uk](mailto:gkenturp@hotmail.co.uk) 07763 332759  
Diploma of The Bayly School of Reflexology, Member of The British Reflexology Association

**MOBILE FOOT HEALTH CARE**

Providing a thorough nail and foot care treatment in the comfort of your own home.

Registered and insured practitioner.  
**STACEY WILLIAMS FHP Dip RFHP**  
**07794 022 618**



**CARDS, GIFTS, HOMEWARE, HARDWARE AND EVERYDAY ESSENTIALS!**

Friendly Staff, and a great range of stock with prices to match!  
If you need it, and you want it! We've probably got it!  
Pop inside before you pop online!

**18 High Street, Cleobury Mortimer**

**Tel: 01299 489590**

**Email: [cleoburrs.onthehighstreet@gmail.com](mailto:cleoburrs.onthehighstreet@gmail.com)**

**Like our Facebook page CLEOBURRS**

Keep up to date with the latest products!



**GW**

## **Tree Stump Removal**

Commercial and residential.

**Fully insured, qualified and professional.**

**Your property left neat and tidy.**

**Happy to give quotes with no obligation.**

**Ring Sam: 07787095668 or 01299832549**

**Email: [sam@gwstumpremoval.co.uk](mailto:sam@gwstumpremoval.co.uk)**

## **Rachel Siddall**

DipCFHP, MPSPract

Footcare in the privacy of your own

home:

Nail trimming  
Ingrowing toenails  
Corn removal  
Thickening nails  
Callus reduction  
Verruca treatment  
Diabetic foot care



**07478 007913**



## **Hobbs Building Services**

EST 25Years.

A Total Plastering, Maintenance and Building Service for your home,  
business and outbuildings.

Insurance work undertaken

Emergency call out service for general plumbing, roofing, boarding up damaged doors and  
windows. For a free quote please call;

Ian on; 07967190742

Email: [hobbsbuildingservice@yahoo.co.uk](mailto:hobbsbuildingservice@yahoo.co.uk) Or Call/Text Kelly on; 07790085307



## Cleobury Mortimer Benefice Church services throughout the Benefice in February

### St Mary's Cleobury Mortimer

Sunday 5<sup>th</sup> February – 10am Family Eucharist  
Sunday 12<sup>th</sup> February– 8.30am and 10am Eucharist  
Sunday 19<sup>th</sup> February– 10am Eucharist  
Sunday 26<sup>th</sup> February - 10am Eucharist

### St Michael and All Angels', Hopton Wafers

Sunday 5<sup>th</sup> February - 9.30am Eucharist  
Sunday 19<sup>th</sup> February- 9.30am Eucharist

### St John the Baptist, Doddington

Sunday 5<sup>th</sup> February– 11.am Eucharist  
Sunday 19<sup>th</sup> February– 3pm Evening Prayer

### All Saints', Neen Sollars

Sunday 5<sup>th</sup> February– 11.am Village Worship  
Sunday 12<sup>th</sup> February – 11.am Eucharist  
Sunday 19<sup>th</sup> February – 11.am Village Worship  
Sunday 26<sup>th</sup> February – 11.am Village Worship

### St George's, Milson

Sunday 5<sup>th</sup> February – 6pm Evening Prayer  
Sunday 19<sup>th</sup> February – 9.00am Eucharist

### St Mary's, Neen Savage

Sunday 5<sup>th</sup> February– 6pm Evening Prayer BCP  
Sunday 19<sup>th</sup> February – 11.am Eucharist

### St John the Baptist, Kinlet

Sunday 12<sup>th</sup> February – 11.15 Eucharist BCP  
Sunday 26<sup>th</sup> February – 6pm Evening Prayer BCP



**'Drop in at St Mary's' - every Thursday, 10.00-11.30am**  
- for coffee and a chat, if you are feeling lonely and confused, have lost the confidence to go out or have no-one to talk to. If you have problems and are struggling to sort them out or just wish to have a quiet place to sit. This opportunity is free and provides a peaceful environment to sit in the company of others and listen and talk if you wish to.

The Church Office is open Tuesday and Thursday from 9.00am-3.00pm  
Contact details: Grace Johnson cleoburychurch@hotmail.com  
Tel: 01299 272916

# Cleobury Opticians

NHS & private eye tests ♦ FREE children's glasses

FREE NHS glasses ♦ Home visits



Opening Times-	
Tuesday	9am-1pm 2pm-5pm
Wednesday	9am-1pm 2pm-5pm
Thursday	9am-1pm 2pm-5pm
Friday	10am-2pm
Saturday	9am-1pm

[www.cleoburopticians.co.uk](http://www.cleoburopticians.co.uk)

16 Church Street, Cleobury Mortimer, Kidderminster  
DY14 8BX

Tel: 01299 270012

Email: [cleoburopticians@outlook.com](mailto:cleoburopticians@outlook.com)



All Aspects of carpentry work undertaken

Level 3 City & Guilds in Carpentry & Joinery, 20 years of experience

Tel: 07854 032750

Email: [duncpearce1@gmail.com](mailto:duncpearce1@gmail.com)

## Stewart Mumford Architectural Services Bespoke Architecture

Great value personal service backed up with extensive local knowledge, established links with other construction professionals to ensure comprehensive packages specifically tailored to individual needs.

Initial consultation free of charge.

Specialist in Works to Listed Buildings, Affordable Houses, Open Market Houses, House Extension and Alteration, Barn Conversion and Commercial Projects.



T: 01299 271068

M: 07977 921039

E: [office@stewartmumford.co.uk](mailto:office@stewartmumford.co.uk)

## Simon Morton

### Colour is Just Around the Corner (Honest)

I hate to start 2023 on a downer, but let's be frank - winter can be a dreary time for gardens.

My own patch is a case in point - a barren wasteland of frozen/waterlogged soil (depending on the time of day) and hardy weeds. The few bedraggled plants left in my patio pots gave up the ghost some time ago, meaning the Christmas lights we draped around the front door were illuminating little more than a mix of brown, slimy leaves and the odd drooping Cosmos stalk (minus any leaves or seed head, obv). In effect, we've entered 2023 with an array of dead plants in empty pots, so if you're looking for winter colour, keep moving—nothing to see here.

This obviously won't do. It's time to start planning for next winter to ensure we have a little colour to brighten up the colder months. Option one is to plant evergreens, such as holly, pine, and spruce, which will keep their leaves but run the risk of making my patio look like Santa's grotto all year round.

Option two is to embrace winter flowering shrubs (witch hazel, winter jasmine and mahonia, that sort of thing) and rely on them to add the 'pop' of colour that's currently missing. Hmm...we may have a contender once I recover from the heart palpitations I got when looking at the price of these at the garden centre.

Option three (and the one thing I have done consistently since we moved in) is to stick a bunch of daff, tulip and crocus bulbs in and patiently wait until Spring. Yes, there's a bit of delayed gratification, but the weird weather of late means that things are moving on apace. At the time of writing, our snowdrops are already sticking their heads above the parapet, and a few daffs are bravely making their presence felt.

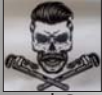
Admittedly, this feels way earlier than last year, but then again, it may just be me catastrophising, a habit I've picked up as I've got older. Either way, colour seems to be just around the corner.

As well as the monochrome nature of my garden, I'm having to find ways of dealing with the soginess. Everything is soaked through, leading to waterlogged beds, a very, um, 'moist' greenhouse (heat and moisture - the perfect combination for fungal diseases and pests - woohoo!) and very slippery paths. There was an amusing interlude earlier this week when I was attempting to wheelbarrow compost from one end of the garden to the other. A combination of a slippery surface and my own ungainly lack of balance meant that I ended up on my back, covered in wet clay mud and looking around to see if anyone had spotted me going arse over elbow. Once I realised the coast was clear, I couldn't help laughing at the ridiculousness of the whole situation and promptly walked back inside and had a bath.

So, in addition to the long list of plants for the summer months and factoring in some winter colour, I probably need to add drainage to my gardening to-do list. The magazines recommend pathways of crushed stone or gravel as long-term solutions to my pratfall problem or, as an absolute minimum, using wooden planks or boards as a walkway to protect the ground. However, all I can think of is how painful that would be to land on.

As all gardeners know, January and February are the tough months. The yearning to get out there and work up a sweat without the danger of falling flat on your backside is strong, but patience, a pile of seed catalogues and a roaring fire will have to suffice until we can really get back at it.

*Simon Morton*



## A M Plumbing & Heating

- \*General plumbing
- \*Oftec approved
- \*Bathrooms
- \*Oil boilers
- \*Hot water cylinders
- \*Servicing
- \*Central heating
- \*Power flushing

**Call Today: 07565 181554**

## CLEOBURY CARPENTER

New to the area – Est since 2006

All Aspects Of Carpentry & Joinery

Your Local 'Handy Man'

No Job Too Big Or Small

Contact Joe - 07752 463 651

hurleyhomesltd@outlook.com

# Quality firewood for sale

We source our wood from a reputable and sustainable source.

Can deliver up to 20 mile radius from Bayton (DY14 9NA).

We can do multiple and large loads.

Please call to enquire on pricing.

**John Edwards 07531025018**



H.C.P.C Number CH22527

## Cleobury Chiropody Janet Manley

Qualified Chiropodist  
MSSCh. MBChA  
BSYA (reflex) REIKI Master

Tele:- 01299-272841

Mob:- 07805-268439

Email: janetpmanley@yahoo.co.uk

2, Tenbury Road,  
Cleobury Mortimer,  
Kidderminster,  
Worcs.  
DY14 8RB

## A Round Of Appaws

Professional Dog Groomer  
C&G Levels 2 & 3 Diploma

Fully Insured

Call or text Jules on  
07368359144

aroundofappaws1@gmail.com



facebook



Instagram

## A. Farr Painting & Decorating

Give your home a beautiful new look....

Contact:

andyfarr12345@gmail.com 07815 855340

## Lisa Steward Ironing services

Hopton Wafers



Please call: 01581065436 for more information



## More Clarion Smalls

### GUTTER CLEANING SERVICE

No ladders or scaffolding needed.  
Can reach any awkward place.

All residential and commercial

Competitive rates

Call Ian on 07870384096



*Little Detton*

Home Grown Meats

Cleobury Mortimer  
DY14 8LW  
07825030607  
www.littledetton.co.uk

Free delivery for  
orders over £30  
within 10 miles

Rare Breed Beef, Lamb, & Pork, Sausages,  
Bacon & Gammon, Free Range Chicken  
See us at the Farmers Market

## HIS & HERS

### Dog Grooming Parlour

All breeds and  
Cross breeds professionally  
Trimmed and Groomed



J. A. Guest

Tel: 07790 796 027

### Washing Machine

### Repairs and Sales

### JULIAN BREAKWELL

Telephone 07791 633 746

Repairs to all makes, including  
Bosch, Hoover, Zanussi and  
Hotpoint

**NO CALL OUT CHARGE  
FIXED LABOUR COST**

## Ever After

- Breakfast club
- After school club
- Holiday club
- "Forest schools" outings
- 15hrs education funding
- 24U funding
- Age ranges: 3 months to 11 years



Day Nursery  
Cleobury Mortimer

Please contact us on 01299 272 777  
Or Call in to see us anytime.

Friendly, Caring Environment for the Community

### PAUL LYNCH PLASTERING SERVICES

Recently relocated. Offering all aspects  
of plastering.including making and  
repairing mouldings, cornices, etc.  
Fully insured, references available.

**07890 049 592**

or

**01299 272931**

## Piano tutor

*Francis Engleheart*

*All ages — I specialise in teaching adults  
without previous experience*

*I come to you*

07710 288526 • [fengleheart@hotmail.com](mailto:fengleheart@hotmail.com)

**S. L. CARTER**

**PROFESSIONAL PAINTER AND  
DECORATOR**

**PLASTERING, TILING, COVING AND  
GLAZING**

**CLEOBURY MORTIMER**

**TEL: 01299 272868**

**MOBILE: 07815 483 029**

# NEWSPAPER DELIVERIES



Monday- Saturday

Covers Cleobury Mortimer and Clee Hill

Contact Laura Callwood on 07495 708404

or lauracallwood@outlook.com

# WILMAS CLEANING & IRONING SERVICES

Experienced cleaner, very trustworthy and reliable. If you would like your ironing done you can drop to my house. I am available weekdays, and weekend's times/days flexible. References are available upon request.



Please contact me for further details on

**07891416477**  
**01299 272 941**



Number Nineteen

# No.19 Denture Repairs

Dental Laboratory

## SPEEDY, QUALITY DENTURE REPAIRS

Cracked/broken dentures repaired the same day.

A 1 HOUR service is available for when time is of the essence, just call to make an appointment .

19 Lower Street, Cleobury Mortimer, DY14 8AL

Email: [nevilleweaver@googlemail.com](mailto:nevilleweaver@googlemail.com)

Phone: 07973856733

All work undertaken by a GDC registered technician



**A.B. Plastering**  
Plus Traditional Lime Plastering

**Adrian Booton**  
PLASTERER

4 Severne Green, Bayton  
Nr Kidderminster, DY14 9LL

Tel: 01299 832 838  
Mobile: 07974 582 524



**TOTAL PROPERTY MAINTENANCE**

Fireplaces built for multi-fuel burning stoves,  
Plastering, Building & General Maintenance

**Rob Taylor**

Mobile: 07944 074540

Landline: 01299 832734

Email: [rptbuilding@hotmail.co.uk](mailto:rptbuilding@hotmail.co.uk)

## E.PURSLOW & SON LTD

Stone, Gravel, Cement Supplies

Approved Coal Merchant

Calor Gas Stockists

Tarmacadam Specialists

Car Parks and Driveways

Constructed.

**TEL: 01299 270314**

David Ward  
**firewood**



Do you need a dependable consistent quality supply of seasoned or kiln dried hardwood and softwood firewood?

Cut and split to suit and delivered in breathable 1.2-cubic metre bags, so no need to restack.

Small delivery vehicle, fitted with crane, can deliver to most locations and situations.

CALL DAVID TO DISCUSS YOUR REQUIREMENTS:

Mobile: 07866 441154

## Alan Smith Aerials

*Digital TV Installations.*

*Freeview* aerials fitted and distributed around the house.

*Freesat* box, dish, and cable supplied and fitted. One off payment, **No contract or subscription required.**

Extra points, Repairs, New fits, Set ups, Multi room.

All work is carried out by a *Local*, fully qualified and insured installer.

**01299 270007 or 07970 675728**

Sad news. Rays Farm, the place that has entertained kids- and adults- for over 30 years, has shut due to 'reasons beyond our control'. What a shame although we are assured that all the animals and birds will be found good homes.

You may have seen the announcement, presented as a step change for bus travellers, of a £2 limit on single fares for the first three months of 2023. Apparently designed to encourage more use of buses, it seems like a good idea – but not here, as Diamond Buses have declined to apply the scheme. They claim that the way the Department for Transport or DFT (always referred to as 'DaFT' by Private Eye) have structured payments to operators means that they would lose money. I'm not sure how that works but just don't bother to ask the driver. This is ironic, as a study by University College London has concluded that being stranded at home by poor public transport is bad for your health, especially in the over 55's. Related problems include high blood pressure, heart disease, obesity, depression and dementia and these are linked to a 26% higher risk of early death. Those who could travel at least 15 miles regularly reported better health and social participation so even if a bus ride to Kiddy isn't high on your bucket list, doing it regularly might give you longer to complete the rest.

In another development, Shropshire Council have been awarded £12 million under the Government's 'Shared Prosperity Fund' designed to help 'levelling up'. Apparently, it is to replace EU regional funding which was lost when we left. It will be some time before we know which projects will benefit from this funding but it will be interesting to see how much of it manages to escape from the 'Shrewsbury black hole' and gets out to rural areas. Should you see either of your Shropshire Councillors around, make sure you bend their ears about it. And if you

see the words 'Shrewsbury North West Relief Road' mentioned at any point, be afraid, be very afraid...

It used to be the case that 'Sex, Drugs and Rock n' Roll' were the prerogative of pop groups. No longer. It seems that MP's on APPG's (all party parliamentary groups) of which there are more than 700 (!) of which around 130 focus on certain countries via all expenses paid (by us) group trips are misbehaving. Incidents include activities that can result in blackmail or attempts to recruit them as spies, incidents such as finding sex workers in their rooms and excessive drinking etc. A No10 spokesman said this was very concerning although whether this is a matter of principle or just jealousy for missing out is not clear. Still, I'm sure that those involved are very grateful for our generosity...

Good news from West Midlands Safari Park, now renting out chalets next to the animal enclosures allowing close up views of the wildlife through panoramic glass windows. A snip at £730 a night for two people although this does include dinner and breakfast. However, I'm not sure whether this means you get dinner or become dinner..Best to check this out before booking.

You may recall the revelations some time back about the amounts of raw or partially treated sewage being pumped into our waterways and around the coast. A map recently published by Thames Water showed large numbers of sites where this is happening, in some places for weeks at a time. They are not alone as all the other companies are in a similar situation. Still, the Government are taking the problem seriously at last and have given the water companies a deadline by which they must fix the problem. It is clear how urgently this is being viewed at Westminster from the deadline date for compliance which is..2064. Words fail me.

*Ariadne J Grumpy*

# Lower St Garage

7 Lower St, Cleobury Mortimer. DY14 8AA



- M.O.Ts on cars, motor bikes & small commercial vehicles
- Tyres, Tyre fitting,
- Puncture repair and Tracking.
- Diagnostics, Air conditioning
- Welding.
- Service and Repairs to most vehicles.
- Delivery and Collection Service Available

**Contact The Team at Lower St Garage on: 01299 270208**



## Stove Installations, Service and Repair

- All solid fuel wood burners and boilers supplied and installed
- Chimneys relined and twin wall systems built
- Chimney Pots, Cows, Carbon Monoxide alarms and Air Bricks fitted
- All Stoves and Fires serviced including chimney sweep
- Hetas Landlord Safety Certificates

Tel: 01299 272712 Mbl: 07807 343006  
email: [info@rweaversservices.co.uk](mailto:info@rweaversservices.co.uk)



Family run business of 30 years, call us for a free no obligation quote

**Finance available, buy now and pay later**

5 Lupin Works, Worcester Road, Kidderminster DY10 1JR  
Phone: 01562 822855 – Email: [sales@twshq.com](mailto:sales@twshq.com)

## THE CLARION SOCIAL CALENDAR - FEBRUARY 2023

Date	Time	Details
Wed 1 <sup>st</sup>	6-7pm	Late Night at the Food Bank, Market Hall
	7.30	Whist Drive at Doddington Village Hall. Good parking – great venue
		DOMESTIC RUBBISH COLLECTION TODAY
Thurs 2 <sup>nd</sup>	10.00	Rock Pathfinders step out from Blackstone car park, Bewdley by-pass PAGE 21
	7.00	Dancing and Health Club, Market Hall PAGE 11
Sun 5 <sup>th</sup>	10.00	Country Walk starts from the Parish Church. All welcome
Mon 6 <sup>th</sup>	8.00	Bingo every Monday at the Market Hall
Wed 8 <sup>th</sup>	10.00	Walking for Health start from CM Market Hall. PAGE 21
	10.00	CoCo Coffee Morning at the Market Hall
	12.30-2pm	Soup Lunch at Melville Methodist Church, Oretton
	7.30	Royal British Legion meet at the Sports and Social Club, Love Lane
		DOMESTIC GARDEN & RECYCLING COLLECTION TODAY
Thurs 9 <sup>th</sup>	7.00	Dancing and Health Club, Market Hall
Mon 13 <sup>th</sup>	6.30	Creative Writing Group meet at the town Library, Love Lane
	7.30	Cleobury Gardeners, St Elizabeth's Church, Lower Street. PAGE 9
Wed 15 <sup>th</sup>	7.30	Whist Drive, Doddington Village Hall
		DOMESTIC RUBBISH COLLECTION TODAY
Thurs 16 <sup>th</sup>	10.00	Rock Pathfinders walk from the Grange, Mortimer's Cross, Leominster. PAGE 21
Fri 17 <sup>th</sup>	8.00	Bingo Night at Doddington Village Hall
Sat 18 <sup>th</sup>	9.30	Cleobury Country Farmers Market, in and around St Mary's church
	2.15	Cleobury RFC are at home to Bridgnorth!! – cheer them on at the playing field
Sun 19 <sup>th</sup>	7.30	Birmingham Philharmonic Orchestra in concert at St Mary's Church. PAGE 11
Mon 20 <sup>th</sup>		Adam Ponsford's fund-raising start at Ludlow Market. PAGE 5
Wed 22 <sup>nd</sup>	10.00	Walking for Health, start at CM Market Hall. PAGE 21
	10.00	CoCo Coffee Morning in the Market Hall
	7.30	Clows Top Gardening Club, Victory Hall, Clows Top. PAGE 11
		DOMESTIC GARDEN AND RECYCLING COLLECTION TODAY
Fri 24 <sup>th</sup>	8.00	Bingo Night, Doddington Village Hall
Sun 26 <sup>th</sup>		Cleobury Concert Brass contest the local match at Corby. Wish them Luck! PAGE 5
Mon 27 <sup>th</sup>	7.30	The Nearly Dead Poets Society meet at the town Library, Love Lane
		AND LOOKING FORWARD TO MARCH....
Wed 1 <sup>st</sup>	7.30	Whist Drive, Doddington Village Hall
		DOMESTIC RUBBISH COLLECTION TODAY
Sun 5 <sup>th</sup>	10.00	This month's Country Walk start from St Mary's Parish Church
		AND A REMINDER ABOUT THESE REGULAR LOCAL EVENTS:
Mon	8.00	Bingo with Suzanne in the Market Hall
Tues	2.00	The Friendship Club meet in the Parish Hall
Thurs	10.00	Drop In at St Mary's Church to chat and maybe share a problem
	7.00	Lessons in the ancient Birth Dance and good health habits in the Market Hall

**SEVERN HOSPICE:** A group from the Severn Hospice local support group recently visited the hospice to see around the recent new build in Shrewsbury. A wonderful "Living Well" center has been built costing over £5 million. It is for patients with life limiting illnesses can "Live Well" during their last days, Weeks, years. A bright happy place has a craft room as well as space for coffee mornings for patients, together with space for consulting rooms for therapies, doctors and nurses.

We completed our visit with a super lunch in the coffee shop - again raising funds for the hospice. The coffee shop is very busy and open to the public. Well worth a visit if you are ever in the area. *Rosemary.*

**Tele:-** **01299-272757** *Hands on Printing* **Email:-** [clickclick2@hotmail.co.uk](mailto:clickclick2@hotmail.co.uk)  
**Mobile 07708 587787**

All digital media printed to 6"x4" 5"x7" 8x6" 10"x8"  
**CANVAS WRAPS FROM 12"X16" - 30"X 20"**  
**ENLARGEMENTS FROM 12X10" TO 24X36"**  
FROM PHOTO'S, DIGITAL MEDIA & 35mm SLIDES

**PASSPORT PHOTO'S ONLY £5-00**  
**WHILE YOU WAIT**

**MOST VIDEO FORMATS TRANSFERRED TO D.V.D.**  
 USB or SD cards

INCLUDING VHS - VHSC - SONY 8 - DIGITAL 8 - Hi8 - MINI DV & BETAMAX  
REEL TO REEL & CASSETTE  
**AUDIO TAPES & OLD LPs TO CD**

**PHOTO & VIDEO FILES TRANSFERRED FROM MOBILES TO DVD ETC.**

**Video Filming Service**

43, High St.  
 Cleobury Mortimer.  
 DY14 8DQ

**STANDARD 8 - SUPER 8 FILMS TRANSFERRED TO D.V.D.**  
 USB or SD cards  
**DAMAGED PHOTOGRAPHS RESTORED ETC.**

**BIRTHDAY AND CELEBRATION BANNERS**

*Look Who's 50 Today!*

**VINYL BANNERS - BUSINESS CARDS - SHORT RUN FLYERS**  
**INVITATIONS - ORDERS OF SERVICE**

**B-W OR COLOUR PHOTOCOPIES**  
**SELECTION OF PHOTO FRAMES**

*Traditional Studio Portraits and Pet Photo's*



**LUDLOW SALVAGE**  
 ~ Est 2017 ~  
 Reclaimed Building Materials  
 and Architectural Antiques

Station yard, Station road,  
 Woofferton, Ludlow SY8 4AW


**T 07805 312168**

**@ ludlowsalvage@gmail.com**

**f /ludlowsalvage**


**📷 /ludlowsalvage**

**WWW.LUDLOWSALVAGE.CO.UK**



**W. BROWN**  
**PLUMBING & HEATING**

Registered Heating Business



## OIL BOILER ENGINEER

- Boiler servicing & repairs
- Worcester Bosch installer
- General plumbing work

07974121297    [billejbrown75@gmail.com](mailto:billejbrown75@gmail.com)    [@wbrownplumbingheating](https://www.instagram.com/wbrownplumbingheating)

---

# Cleobury Mortimer Golf Club

At Cleobury Mortimer Golf Club we believe that a really enjoyable golf day takes more than just a great golf course. We make sure that your whole experience, from the friendly welcome in the golf shop to your drinks and meal in our relaxed clubhouse, is all part of a day you'll remember.



## Everyone Welcome

Membership available.

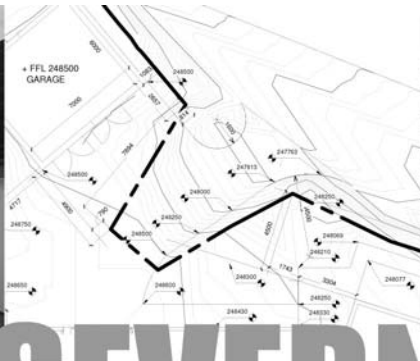
Just some of the many benefits of joining Cleobury Mortimer Golf Club

- Access to full length 27- hole golf course
- Opportunity to achieve and maintain a handicap
- Family, Friendly Environment
- Playing opportunities at all times of the week
- A range of competitive opportunities
- Open dawn to dusk 363 days a year.

*We look forward to meeting you at Shropshire's friendliest golf club.*

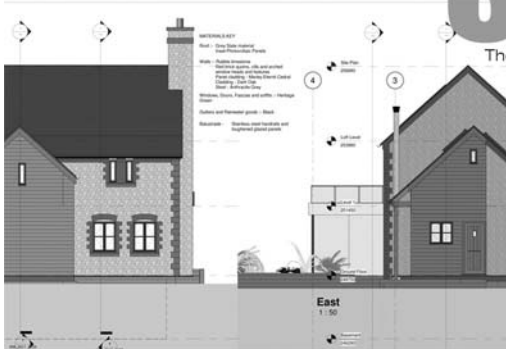


- 📞 01299 271 112 (ext 1)
- ✉️ [pro@cleoburygolfclub.com](mailto:pro@cleoburygolfclub.com)
- 🌐 [www.cleoburygolfclub.com](http://www.cleoburygolfclub.com)

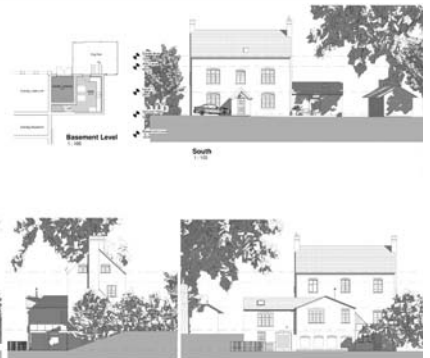
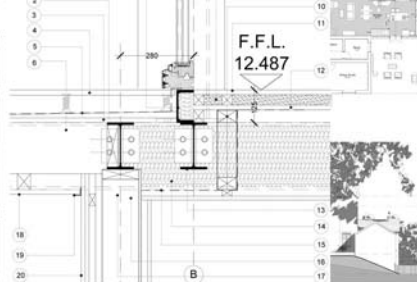


# SEVERN

architects



The Guard House, Cleobury Mortimer, DY14 9BD



We are a friendly Shropshire based architectural practice with plenty of experience in all kinds of residential projects large and small. Using the latest 3D software package and technology we can turn your virtual dream home into a reality.

Contact us now on 07825 759484 or email [julie@severnarchitects.co.uk](mailto:julie@severnarchitects.co.uk) for your consultation

Our Architectural Design Services include

- Design & Feasibility Studies
- General project Advice
- 3D Modelling
- 2D CAD Drawing
- Planning Advice and Submissions
- Building Regulation Applications
- Tender & Construction Drawings
- Contract & Project Management

RIBA 

Chartered Practice

# KIDDERMINSTER

## SELF STORAGE AND REMOVALS

### STORAGE

Free insurance . Flexible Terms  
Fixed Price Guarantee . No hidden costs

### REMOVALS

Professional Removal Service  
Est. over 25 years

### PACKAGING MATERIALS

Boxes, Bubblewrap, Tape Etc. for sale  
Free local deliveries on orders over £20

**01562 744088**

[www.kidderminsterselfstorage.co.uk](http://www.kidderminsterselfstorage.co.uk)

Unit 11 Finepoint Way, Stourport Road, Kidderminster DY11 7FB  
[info@kidderminsterselfstorage.co.uk](mailto:info@kidderminsterselfstorage.co.uk)







## **CLEOBURY COMMUNITY HUB**

### Coffee Shop, Climb61, Youth Events

Mondays - 9:30am-12:45pm, 2:30pm-9pm

Tuesdays - 9:30am-12:45pm,  
2:30pm-9pm

Fridays - 9:30am-12:45pm,  
2:30pm-5:30pm

January is often a month where people hide away and look forward to the warmer, brighter days. However, we have seen a great number of regular and new visitors coming to the CCH for all of our activities. Our **Warm Welcome Lunch** is going really well, every Monday 12:30pm-2pm. If you fancy a change of scenery and a free soup lunch then pop in and join us. Free wifi and a warm welcome awaits, all the time and especially in these winter months.

The **Soup Garden** is our micro-allotment and has been put together and nurtured by volunteers in our community. Please come in, ask questions and get involved. We would love to get involved in growing veg at the CCH.

#### **FOCUS ON: Climb61 Bouldering Comp - Saturday 25th February 10am-4pm**

This is our first Bouldering competition and will be held throughout the whole day. Come along, hang out with others and get your climb on! Boulder Problems are climbing routes varying in difficulty and just like the name, they are Problems which you need to solve! We have 6 boulder problems for both age categories and an eliminate problem to have a go at too. Great prizes and lots of fun.

£10 entry for the comp. Children (6-15) and Adult (16+) entry.

**The coffee shop is open all day too!**

Climb61 Session Times - To book climbing and events: **[www.smy.org.uk](http://www.smy.org.uk)**

**Tuesdays** - 9:30am-11am, 11:15am-12:45pm, 2:15pm-3:45pm, 4pm-5:30pm,  
5:45pm-7:15pm, 7:30pm-9pm **(Mondays)** 6:30pm-8pm

**Fridays** - 9:30am-11am, 11:15am-12:45pm, 2:15pm-3:45pm, 4pm-5:30pm

**LADIES NIGHT** - 2nd February and the following month - 2nd March

# ONE STOP ROOFING

## The Flat Roof Specialists

- Rubber, Fibreglass & Felt
- Re-pointing & Chimney Repairs
- Fascias & Guttering



**Take advantage of our offer:** Replace your flat roof Making EPDM (rubber) your choice for a long lasting, weatherproof & high slip resistant membrane, with a lifespan of 50 years, **get it for the same price as felt**, which only carries a 10 year guarantee!

Replace your flat roof with EPDM (rubber) & add a skylight or lantern, giving extra light to your room starting **from as little as £400!!**

Freephone 0800 0855277 \* 07538 471274

[Www.onestop-roofing.co.uk](http://www.onestop-roofing.co.uk)

[onestoproofinguk@gmail.com](mailto:onestoproofinguk@gmail.com)

Family business est. 35 years.  
All repair work undertaken

Proud members of  
**Checkatrade.com**  
Where reputation matters

## CLEOBURY SEAFOOD & FREEZER CENTRE

6 Newhouse Farm - Tenbury Road - Cleobury Mortimer

**01299 271345**

### Ready Meals

*We stock a wide range of ready meals, from the ordinary to the extra ordinary !  
Plus a range of Vegetarian, Gluten Free and Vegan meals.*

### Mr Dave's

*Meat, Chicken, Prawn and Vegetarian Balti, Madras Curry  
Mr Dave's extra large naan, plain and garlic & coriander.*

### Fish

*Cod, Haddock, Plaice fillets, Sea bass, Lemon sole, Cod Loins, Smoked Haddock.  
Battered & breaded fish fillets. Young's Jumbo Cod Fish Fingers.(Very Popular)*

### Seafood

*Raw king Prawns, Squid, , whitebait, cooked tiger prawns, scallops, seafood cocktail.  
Hot & Spicy Prawns, Breaded Cod & Plaice Goujons*

*New Fish Cakes Thai Style Cod & Prawn, Smoked Haddock, Mozzarella & Spring Onion,  
Sea Bass, Cod, Lime & Ginger.*

### Fruit and Vegetables

### Potato Products

*Bannister Jacket Potatoes, Oven chips, Sweet Potato Fries Twister Fries, Hash Browns, Spicy Wedges*

### Chicken Products

*Southern Fried Breaded Chicken Steaks, Breaded Chicken Goujons, Chicken Nuggets, Chicken Bites.*

### Gateaux for all occasions

### BENNETTS ICE CREAM

**Opening Times 9am to 4.30pm Mon to Friday. Saturday 9am to 12**

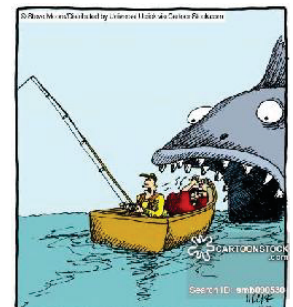
Visit our web site [www.cleoburyfreezercentre.co.uk](http://www.cleoburyfreezercentre.co.uk)

**Cleobury Clarion February 2023**

**Page 50**



"We tried artificial flies. We tried lures. We tried live bait. Nothing works ... it's like they're psychic!"



"Blood-curdling screams. Hayes, will do nothing to help us catch a fish."



### Home Support Services

All staff enhanced DBS checked with over 20yrs experience and training within the local authority/social services mainstream and dementia care sector. Fully insured.

Are you in need of support with the following basic day to day tasks?

Assistance during the day or night	Completing Forms
Companionship	Pet Care
Shopping/Household tasks	Attending social events/ appointments

Contact Liz  
Tel: 01299 271623  
Mob: 07826 929222  
liz@lifelifeathome.co.uk

Other support services available on request.

[www.lifelifeathome.co.uk](http://www.lifelifeathome.co.uk)

Contact Tracey  
Tel: 01299 211660  
Mob: 07957 659909  
tracey@lifelifeathome.co.uk

BOOK YOUR MOT WITH US



## LEWIS MOTORS KINLET

☎ 01299 841 391



**SERVICING & REPAIRS TO ALL MAKES & MODELS**

■ Clutches & Cambelts	■ Exhausts, Batteries & Tyres	■ Wheel Alignment
■ Diagnostics	■ Recovery	■ Welding

Follow us on Facebook: [LewisMotorsKinlet](https://www.facebook.com/LewisMotorsKinlet)

## KINLET C OF E PRIMARY SCHOOL

Love to Learn – Learn to Love







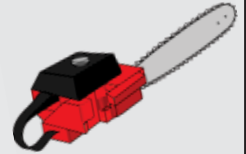



- Outdoor play areas
- Small family atmosphere
- Kind – Inspire – Nurturing – Learning – Eco-friendly -Teamwork

[www.kinlet.shropshire.sch.uk](http://www.kinlet.shropshire.sch.uk)      [admin@kinlet.shropshire.sch.uk](mailto:admin@kinlet.shropshire.sch.uk)  
 Telephone: 01299 841210



## N.R. Evans Landscaping



- Grass cutting
- Strimming
- hedge cutting
- garden and site clearance
- Fencing, including:
- Panel fencing
- Post and rail fencing
- Picket fencing
- Stock fencing

domestic and commercial customers welcome

**Call for a chat on 07535 902847**

Email: [nrevansgardenmaintenance@gmail.com](mailto:nrevansgardenmaintenance@gmail.com) Facebook: N.R.Evans Garden Maintenance

## Booton Brothers



### Construction

**Rich: 07445298747**

**Mike: 07853225401**

**[bootonbrothers@outlook.com](mailto:bootonbrothers@outlook.com)**

**All building work undertaken**

## Elite Sweeps

Professional Chimney Sweep

## & HETAS Stove Installer

- ✓ Prompt, reliable & friendly service.
- ✓ Cowls and Chimney Pots fitted.
- ✓ Fully qualified and fully insured.
- ✓ Guild certificates issued after every sweep.
- ✓ HETAS Approved Installer.



Call Eddie Tel. 01299 382222 / 07895 612915

[www.elitesweeps.co.uk](http://www.elitesweeps.co.uk)



## I.P.T. GROUND SOLUTIONS

*Over 30 years experience*

For all pipe installations:

- Sewage • Storm drainage
- Blockage/Repairs • Ditches
- Grass Cutting / Hedge Trimming
- Driveways • Ground clearance

*For all your ground needs*

**Contact Ian on:**

**T: 07870 384 096**

**E: [ian.ptaylor@yahoo.com](mailto:ian.ptaylor@yahoo.com)**

**W: [iptgroundsolutions.co.uk](http://iptgroundsolutions.co.uk)**

Welcome to 2023 and Beat the Scammers. There is so much still going on, that it's hard to decide what to cover in these articles. But this month as we start 2023, I thought we could reflect on the larger picture including Neighbourhood Watch. Some of you who read the Clarion in hard copy may not be aware that we have a local Neighbourhood Watch group which is supported on Social-Media (Facebook). This was set up in 2020 when Covid hit and public meetings were not possible.

However, the background to Neighbourhood Watch is interesting. In 1964, 28-year-old Kitty Genovese was stabbed in New York outside the apartment building across the street from where she lived. Two weeks after the murder it was rumoured that 38 witnesses saw or heard the attack, but none of them called the police or came to her aid. This prompted inquiries into what became known as the bystander effect or "Genovese syndrome", and the murder became a staple of American psychology textbooks for the next four decades. It also motivated a community response and the very first Neighbourhood Watch scheme was set up.

The concept developed and has spread worldwide and the spirit of looking out for our neighbours is what is embodied in our local scheme and in the articles that I have been writing for the last 2 years. My articles have focussed on the types of criminal activity that preys, not just on the elderly and vulnerable in our community, but everyone whether they are frequent users of Social-Media, the internet, use either a smart phone, an older style phone or just a landline at home.

The scammers use every possible means of communication to get at their targets, which means that unless you live your life devoid of any form of communication, you could be targeted. I have had comments like, "I am an intelligent, aware person" and they can't fool me". But sadly, I still get examples from people who are aware, but have still fallen for increasingly sophisticated approaches of this criminal element.

I can also report that the Police and law enforcement agencies working across national borders have had successes and brought down a gang of over 8 top scammers at the end of last year. Although this is only the tip of the iceberg, it demonstrated that instead of keeping quiet and saying nothing (perhaps due to embarrassment), reporting anything suspicious helps to build a picture of intelligence that Law Enforcement can use to eventually track down the ring leaders.

**So, my message for the New Year is this.** Think twice about any communication you receive either, by phone, text, email or social media. Were you expecting it? Can you be sure you know who it is from? It does not take more than a few minutes to make simple checks and a genuine sender will not be offended if you do this. If you have access to the internet, the web site [www.beat-the-scams.info](http://www.beat-the-scams.info) is a good source of information and is regularly updated. If you wish to join the Facebook group for our local neighbourhood watch

You will find us on **Cleobury Mortimer and District Neighbourhood Watch**.

**Have a safe 2023.**



# EVERYTHING INTERIOR UPHOLSTERY

## REUPHOLSTERY SERVICES:

- AUTOMOTIVE
- CARAVANS
- CAMPER VANS
- TRADITIONAL & MODERN
- COMMERCIAL & BESPOKE
- DOMESTIC
- CARPET & UPHOLSTERY CLEANING  
*(in partnership with WE GLEAM)*

OVER 30 YEARS EXPERIENCE



## CONTACT US TODAY

Unit 19 Old Station Business Park, Cleobury Mortimer, DY14 8SY  
07961 712683 / 07961 792103  
[www.everythinginterior.co.uk](http://www.everythinginterior.co.uk)  
email: [everythinginterior@outlook.com](mailto:everythinginterior@outlook.com)

## Are you thinking about Equity Release?

- **Free** Advice
- **No negative equity guarantee**
  - **Pay off** existing debts
- **Help** your family when they need it most
  - **Boost** your retirement fund
  - **Stay** in the home you love
- Access to highly competitive **life insurance** policies
- Qualified **Will Writer** so call me to have your Will written

**Call me now to find out more**

Equity release will reduce the value of your estate and may effect your entitlement to means-tested benefits.

07966366505 | Stephanie@midasfp.com | www.midasfp.co.uk  
Midas Financial Planning Services Ltd is authorised and Regulated by the Financial Conduct Authority



**I'm Stephanie**

**07966  
366505**

### Bespoke framing and mounting for:

- Artwork
- Photographs
- Canvases



## The Framing Studio Cleobury Mortimer

Paul Serrell-Cooke  
07791 378240

*Bringing artwork and images to life*



## ARE YOU LOOKING FOR Independent Financial Advice?

Consequential Planning are your local independent financial advisers. We have a highly qualified team with extensive experience in all aspects of financial planning. We can offer help and advice on investments, pensions, protection and mortgages.

Telephone 01299 407128  
to arrange a free financial review or visit:  
[www.cnsq.co.uk](http://www.cnsq.co.uk)





# Burning Blocks

www.burningblocks.co.uk



A safe and easy to use alternative for logs for both wood stoves and open fires

Discount for local delivery quote: "family10" at the checkout

- Easy to light / roaring fire in under 5 mins
- Easy to stack / 10kg packs
- High heat / similar to coal on output
- Each briquette lasts over an hour
- Low moisture / 8% moisture maximum
- Store undercover

UK wide delivery available, approx. 2 days

buy online at [www.burningblocks.co.uk](http://www.burningblocks.co.uk)

For more information:-

Email: [burningblocks@gmail.com](mailto:burningblocks@gmail.com) Website: [www.burningblocks.co.uk](http://www.burningblocks.co.uk) FB: <https://www.facebook.com/burningblocksbriquettes>



## Richard Haines

### The Worcestershire Chimney Sweep

- ◆ Traditional & Power Sweeping Services
- ◆ Certified Chimney Sweep
- ◆ Insurance Recognised certificate issued



M: 07752 116629 T: 01584 781358 E: [lostcity5@hotmail.co.uk](mailto:lostcity5@hotmail.co.uk)

[www.theworcestershirechimneysweep.co.uk](http://www.theworcestershirechimneysweep.co.uk)




# LUDLOW FIREWOOD

~ Est 2019 ~

Suppliers of Premium Grade Ready to Burn Firewood, Beautifully Crated and Delivered to Your Door



**T** 07949 318014

**@** [ludlowfirewood@gmail.com](mailto:ludlowfirewood@gmail.com)

**Instagram** /ludlowfirewood

**Facebook** /ludlowfirewood

Station yard, Station road, Woofferton, Ludlow SY8 4AW

**WWW.LUDLOWFIREWOOD.COM**

Available in Barrow bags and nets for all your access requirements.





### Thank you to Paul French

Paul French retired from the Town Council at the end of December 2022 after eight years of service to the community. Whilst being an active councillor, Paul also put in a lot of hard work with the Festival, Christmas Light displays, WWI and Jubilee events as well as planting spring bulbs in the QEII Park.

### Christmas Window Competition

We are pleased to continue to work with the Clarion for the Best Dressed Christmas Window Display – the 2022 winner being Red Hare – Congratulations!



### Neighbourhood Development Plan

In December 2022, Cleobury Mortimer Town Council formally submitted the Cleobury Mortimer Neighbourhood Development Plan to Shropshire Council for the next stage of the process known as Regulation 16. Shropshire Council published the plan for consultation on 16<sup>th</sup> January 2023 which will run for six weeks closing at 5pm on 27<sup>th</sup> February 2023. The Neighbourhood Plan documentation can be viewed online at [www.shropshire.gov.uk/get-involved/cleobury-mortimer-neighbourhood-plan-consultation-2023/](http://www.shropshire.gov.uk/get-involved/cleobury-mortimer-neighbourhood-plan-consultation-2023/) and a copy has also been made available for viewing at Cleobury Mortimer Library and Shirehall, Abbey Foregate, Shrewsbury. Representations on the Draft Cleobury Mortimer Neighbourhood Development Plan may be submitted to Shropshire Council by emailing: [planningpolicy@shropshire.gov.uk](mailto:planningpolicy@shropshire.gov.uk) or by post to: Planning Policy, Shropshire Council, PO BOX 4826, Shrewsbury SY1 9LJ.

After the consultation closes on 27<sup>th</sup> February 2023, the Neighbourhood Plan documentation, together with any representations received, will be submitted to an independent Examiner for final review, further comment and a decision on whether the plan can proceed to a local referendum. At referendum, if the residents of Cleobury Mortimer vote in favour of the plan, it will be adopted shortly after and any future development in the town will need to comply with the policies.

Cleobury Mortimer Town Council will post updates on the Town Council website and notice boards as the final stages of the process progress.

### Community Meeting

As a follow up to the public meeting last summer there will be a meeting held at the Parish Hall on Wednesday 15<sup>th</sup> February, commencing at 6pm with members of the police, council, community groups and partners. This meeting is open to the public to attend and discuss community matters with representatives of various organisations. We are keen to encourage conversations, work together and help find solutions to any issues or concerns in Cleobury.

### Grants available to community groups

The Town Council still has some funding available to support local community groups based in Cleobury Mortimer. Grants are available for activities or for equipment. If you have a project or activity which would benefit from some financial support please contact our Finance Officer, Mrs Dorothy McBride on 01299 271154 or email [dorothy.mcbride@cleobury.org.uk](mailto:dorothy.mcbride@cleobury.org.uk) for further information and an application form.



## Our Services



SOLAR PV



EV CHARGERS



AIR SOURCE  
HEAT PUMPS



GROUND SOURCE  
HEAT PUMPS



BATTERIES



VENTILATION



UNDERFLOOR  
HEATING



RADIATORS

## About us

EnergyZone is one of the largest renewable energy companies in the Midlands, having provided domestic and commercial sustainable energy solutions for over 20 years.

Based next to Hobsons Brewery in Cleobury Mortimer, we are your local experts in renewable and low carbon energy.

The current energy crisis has been incredibly eye-opening as we come to realise how reliant we are on other countries for fuel. Wouldn't it be nice to become more independent and less reliant on the volatile energy prices... well, that's where we can help!

### What can EnergyZone Offer?

- With over 130 years combined experience, we are keen to help with all your energy enquiries and deliver impartial advice.
- Totally free desktop quotes for Solar PV and Heat Pump systems completely unique to your property to show you exactly how much you could save.
- Self-consumption gadgets to help you utilise all of your generated energy. Whether its a Smart Electric Car Charger, Immersion Diverters or Battery Storage Units, we can help you become more independent from the grid.
- Ensure your heating is as efficient as possible, through underfloor heating installation, radiator upgrades and smart hot water cylinders.
- Advice on all Government Grants and Incentives.
- Local support with annual servicing through our in-house EZCare package.

Get in touch today to start renewing your energy!

For your peace of mind, EnergyZone has the following accreditations:



01299 270011



sales@energyzone.co.uk

# Community Contacts for Clarion Readers

CEMETERY ADMINISTRATOR	Theresa Ray	07703 965 064	theresa.25016@hotmail.co.uk
CLEOBURY COUNTRY CENTRE		01299 272300	In Love Lane, 9 to 5 Mon to Fri.
CLEOBURY DENTAL PRACTICE		01299 271747	<a href="http://www.cleoburydental.co.uk">www.cleoburydental.co.uk</a>
CLEOBURY CARERS	Michelle	01743 341995	<a href="mailto:carerssupport@shropshire.gov.uk">carerssupport@shropshire.gov.uk</a>
CLEOBURY COMPASSIONATE COMMUNITIES	Katja Jones	07966 080111	Tuesday and Thursday at the Medical Centre
CLEOBURY MORTIMER LIBRARY		01299 272301	Open 9 to 7 Mon, 9 to 5 Tues/Fri and 10 to 1 Sat.
LOCAL POLICE	PC Wayne Strangwood	07773 054 587	<a href="mailto:wayne.strangwood@westmercia.pnn.police.uk">wayne.strangwood@westmercia.pnn.police.uk</a>
CLEOBURY MORTIMER GUIDES	Fiona McCallum	07805 737 555	
CLEOBURY MORTIMER SCOUTS	Lowri Hughes		<a href="mailto:cleoburybeavers@gmail.com">cleoburybeavers@gmail.com</a>
CRIMESTOPPERS		0800 555 111	Free Police contact. Talk in confidence, to report any crime.
DOMESTIC VIOLENCE HELPLINE		0800 783 1359	Women's Aid, 24 Hour support:
HOME FROM HOSPITAL		01584 878046	Help over the first weeks back home from Age UK
MARKET HALL	Kim	01299 272732	<a href="mailto:markethall@cleobury.org.uk">markethall@cleobury.org.uk</a>
MEDICAL CENTRE		01299 270209	Out of surgery hours, use the Shrop Doc Service.
SHROP DOC		111	Service available evenings and weekends
THE MEN'S SHED	Pete Blackburn	07776 243 584	<a href="mailto:petblack@me.com">petblack@me.com</a>
THE PHARMACY		01299 270219	Closes for half day on Saturday. Delivers prescriptions
ST ELIZABETH'S CATHOLIC CHURCH	Angela Flowers	01299 270318	Sunday Mass at 9.00am
NIGHTINGALE NURSING FUND	Rosemary Abbiss	01746 718451	
TOWN COUNCIL	Clerk Matthew Sheehan	01299 271154	Cleobury Country Centre 9 to 2 pm, Mon to Fri. <a href="http://www.cleobury.org.uk">www.cleobury.org.uk</a> . Council meets in the Centre on the first Monday of the month
POST OFFICE		01299 270211	In the Select and Save Grocery Store, Church Street
SAINT MARY'S YOUTH PROJECT	Mark Greaves	07828 116810	<a href="mailto:mark.stmarys@live.co.uk">mark.stmarys@live.co.uk</a>
SHROPSHIRE COUNCIL		0345 678 9000	
SOUTH SHROPSHIRE YOUTH FORUM		01584 874922	
VOLUNTARY CAR SCHEME		01299 666119	Mandy Smith
WASTE DISPOSAL		0345 678 9007	The contractor is Veolia
WATER SUPPLY EMERGENCIES	Severn Trent	0800 783 4444	
NEWLIFE CHURCH	Pastor E Stirrup	01562 630595	Sunday services at 10.30

**Collect the Clarion in Cleobury from:** Select and Save Grocery, Londis Store, Cleoburrs, Cleobury Cafe, The Severn Hospice Shop, Mid Counties Co-op, Purslows, and The Library.

**Out in Cleobury Country at:** Heath Farm Meats, **Bagginswood**; **Clee Hill Stores**; **Clows Top Stores**; The Sun and Slipper, **Mamble**; **Hopton Bank Service Station**; ; **Ludlow Library**; **Mahorall Cider Farm**; The Colliers Cafe & Shop, **Rock**; The Fighting Cocks, **Stottesdon**; The Duck Inn, **Chorley**; The Live and Let Live, **Neen Sollars**; The Eagle and Serpent, **Kinlet**; Parker Motors, **Ditton Priors**.

**Copies are also available from the Parish Churches in:** Cleobury Mortimer, Bayton, Doddington, Hopton Wafers, Milson, Neen Savage and Neen Sollars.

**Missed your Clarion? Cleobury Mortimer Library keeps the current month's copy on file and all back issues are available to read as pdfs from [www.cleoburyclarion.co.uk](http://www.cleoburyclarion.co.uk)**

**DEADLINE FOR THE MARCH ISSUE: FEBRUARY 22ND**

**PLEASE NOTE THIS IS THE LAST POSSIBLE DATE TO RECEIVE REPORTS.**

**Editor and Advertising Sales:** Jim Reynolds, 4 Childe Road Cleobury Mortimer Shropshire, DY14 8PA. Telephone: 01299 270642; Mobile: 07410 977 212

Email: [editor@cleoburyclarion.co.uk](mailto:editor@cleoburyclarion.co.uk) or [uncle.jim@icloud.com](mailto:uncle.jim@icloud.com)

The Clarion on the web: [www.cleoburyclarion.co.uk](http://www.cleoburyclarion.co.uk)

Printed by Badger Print and Design of Shifnal. Tel" 01952.730511



# eme CLEOBURY



## FACILITIES INCLUDE:

- Gym 
- Exercise Classes 
- Sports Hall 
- Outside Astro Pitch 
- Netball 
- Tennis Courts 

## OPENING TIMES

<b>MON</b>	7.30am - 10am 10am-12.30pm GP Referral 3.30pm - 10pm
<b>TUE</b>	3.30pm - 10pm
<b>WED</b>	7.30am - 10am 4.30pm - 10pm
<b>THU</b>	4.30pm - 10pm
<b>FRI</b>	7.30am - 10am 3.30pm - 10pm
<b>SAT-SUN</b>	7.30am - 1pm

Pre booking not required for Gym use.  
Induction or Disclaimer required  
in advance of use.

## CLASS TIMETABLE

<b>MON</b>	9.15 - 10am 6.30 - 7.15pm	<b>GENTLE AEROBICS BODY PUMP</b>
<b>TUES</b>	9.15 - 10am 10.15 - 11am 6.15 - 7pm	<b>YOGA YOGA TRX</b>
<b>WED</b>	5.15 - 6pm 6 - 6.45pm	<b>PILATES CIRCUITS</b>
<b>THU</b>	6 - 6.45pm 7 - 7.45pm	<b>STEP SPIN</b>
<b>FRI</b>	6 - 6.45pm	<b>STRETCH &amp; RELAX</b>

Pre-Booking required for Exercise classes  
Book online or at the Centre



**TEME CLEOBURY**  
LOVE LANE  
CLEOBURY MORTIMER  
DY14 8PE  
☎ 01299 271317



[www.teme-leisure.co.uk](http://www.teme-leisure.co.uk)